



MetroParent

*Pregnancy
& Baby*

RESOURCE GUIDE

for Southeast Michigan

Directories: birthing centers, prenatal classes,
doulas, lactation consultants, photographers,
baby stores, play groups and child care

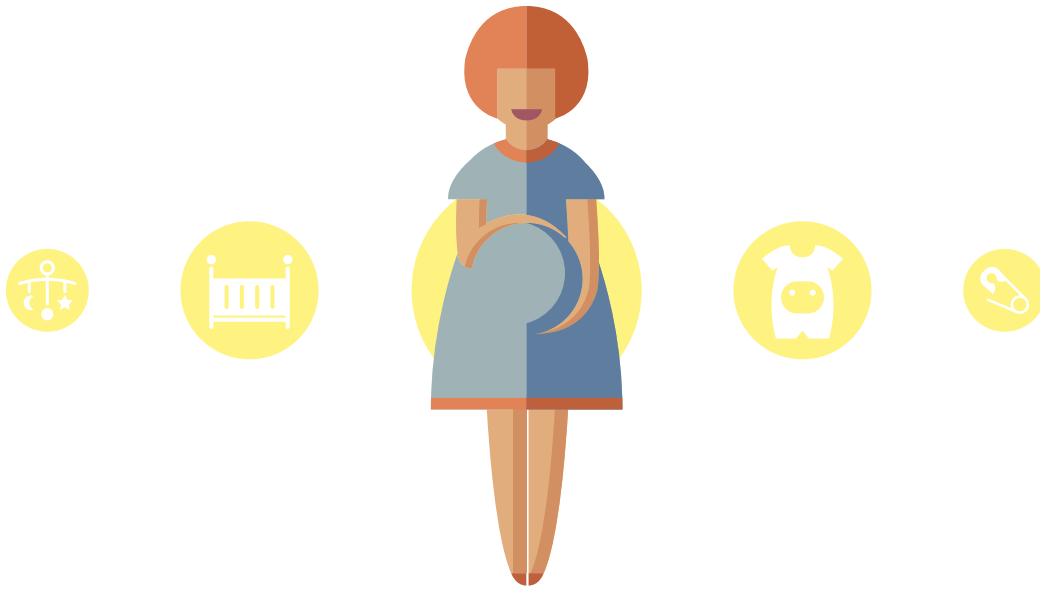


Table of Contents

3	•••••	BIRTHING CENTERS
5	•••••	PRENATAL CLASSES
10	•••••	DOULAS
13	•••••	LACTATION CONSULTANTS
16	•••••	PHOTOGRAPHERS
18	•••••	BABY STORES
20	•••••	PLAY GROUPS
25	•••••	CHILD CARE

Birthing Centers

Baby's almost here! Southeast Michigan health care providers focus on making your little one's arrival safe, comfortable and low-stress. Explore options like spacious homelike suites, midwives and hydrotherapy tubs that create non-hospital-like settings. Many also have a neonatal intensive care unit, or NICU, and couplet care, where mom and newborn have the same nurse. Some even offer gourmet postnatal meals and spa-like perks so baby and mom can get the best care available.

ANN ARBOR/YPSILANTI

St. Joseph Mercy Ann Arbor Family Birth Center

5301 McAuley Drive, Ypsilanti
734-712-0331 • stjoeshealth.org
A dozen modern labor/delivery/recovery rooms host 4,000 births a year. OB triage, surgical facilities, NICU, nurse-midwives, lactation consultants, prenatal education.

University of Michigan Von Voigtlander Women's Hospital

1540 E. Hospital Drive,
Floor 9, Ann Arbor
855-58WOMAN (589-6626)
uofmhealth.org/birthcenter
Delivers 4,500 babies per year. OB-GYNs, family physicians, certified nurse midwives. Has 50 private rooms, newborn ICU.

CLINTON TOWNSHIP

Henry Ford Macomb Hospital Birthing Center

15855 19 Mile Road, Clinton Township • 586-263-2410
henryfordmacomb.com/baby
Hydrotherapy/Jacuzzi tubs, rocking chairs, mini fridges, large picture windows and room service in 17 private rooms. Certified nurse midwife, special care nursery.

COMMERCE

Harris Birthing Center at DMC Huron Valley-Sinai Hospital

1 William Carls Drive,
Commerce • 248-937-5220
hvsh.org/harrisbirthingcenter
Offers 22 private rooms. Lactation consultants; 24/7 obstetrician, pediatrician. Tours available.

DEARBORN

Beaumont Hospital – Dearborn

(formerly Oakwood Hospital)
18101 Oakwood Blvd., Dearborn
313-593-7500 • oakwood.org
Hotel-style room service in spacious suites; level 3 NICU. Couplet care, newborn security system, online baby photo gallery.

DETROIT

DMC Sinai-Grace Hospital

6071 W. Outer Drive, Detroit
313-966-3246 • sinaigrace.org
Sees 2,000 births every year. Has 24/7 neonatologist, couplet care, comfortable birthing suites, 20-bed NICU, nursery security system. Free infant massage classes.

Henry Ford Hospital Birthing Center

2799 W. Grand Blvd., Detroit

313-916-0397

henryford.com/womenshealth

Its 12 private labor/delivery rooms offer free phone, TV and Wi-Fi; 20 private postpartum rooms. Plus NICU, in-house 24/7 OB physicians, certified nurse midwives.

St. John Hospital and Medical Center Birthing Center

22101 Moross Road, Detroit
313-343-4000
stjohnprovidence.org/obstetrics
Certified nurse midwives, 31 suites and 27 private postpartum/high-risk rooms.

The Birthing Center Hutzel Women's Hospital

3990 John R St., Detroit
800-DMC-2500 • hutzel.org
DMC affiliate. Intensive care unit, 24 private labor/delivery rooms with in-room showers, four C-section suites, 42 postpartum rooms.

FARMINGTON HILLS

Beaumont Hospital – Farmington Hills New Beginnings Maternity Center

(formerly Botsford Hospital)
28050 Grand River Ave., Farmington Hills
248-888-2500 • botsford.org
Childbirth classes, free tours, room service/post-delivery gourmet

meal, postpartum suites, secure nursery and electronic system.

GARDEN CITY

Garden City Hospital Family Birthing Center

6245 Inkster Road, Garden City
734-458-3300 • gch.org
Special-care nursery, sofa sleepers for guests; board-certified physicians, midwives, nurses. Multilingual staff/physicians. Halal/special dietary meals. Tours; customized "After Discharge CarePlan."

GROSSE POINTE

Beaumont Hospital – Grosse Pointe Shery L. and David B. Cotton, M.D., Family Birth Center

468 Cadieux Road, Grosse Pointe
313-473-1000 • beaumont.edu
Baby-Friendly certified. Has 12 private suites, dedicated natural-birth suite, spa-like bathrooms, hydrotherapy tubs, birthing balls.

LIVONIA

Miracle of Life Birthing Center at St. Mary Mercy Livonia

36475 Five Mile Road, Livonia
734-655-1100 • stmarymercy.org
Private suites, couplet care, tours, childbirth education, baby basics.

Birthing Centers

MOUNT CLEMENS

McLaren Macomb Family Birthing Center

1000 Harrington Blvd., Mount Clemens • 586-493-8298
mclaren.org/deliveringdaily
Private suites for labor, delivery and postpartum in one spot; 15-bed special-care nursery.

NOVI

Providence Park Hospital's Women's and Infant Health Center

47601 Grand River Ave., Novi 248-465-4100
stjohnprovidence.org/obstetrics
Offers 27 private rooms, special-care nursery, women's health units, pediatrics. Immediate skin-to-skin contact, couplet care. In-hospital photography studio.

PONTIAC

St. Joseph Mercy Oakland Labor & Delivery

44405 Woodward Ave., Pontiac 248-858-3525 • stjoeshhealth.org
Level 3 NICU; advanced care for premature, low birth-weight and critically ill infants. Private single-room care, "mommy meals," skin-to-skin contact immediately after delivery, lactation specialists.

ROCHESTER

The Birthplace at Crittenton Hospital Medical Center

1101 W. University Drive, Rochester

248-652-5000 • crittenton.com
Spacious, private suites with accommodations for visitors, a state-of-the-art infant security system, expertly trained obstetricians and new-mom support.

ROYAL OAK

Beaumont Hospital – Royal Oak Danialle and Peter Karmanos, Jr. Birth Center

3601 W. 13 Mile Road, Royal Oak 248-898-5000 • beaumont.edu
Has 20 private labor/delivery suites; 50-bed NICU. Hydrotherapy tubs, aromatherapy, well-rounded menu and full post-natal care/support.

SOUTHFIELD

Providence Hospital New Life Center

16001 W. Nine Mile Road, Southfield • 248-849-3000
stjohnprovidence.org/obstetrics
Has 10 standard and two high-risk delivery suites. Couplet care, various pain control options, 15 NICU beds, alternative birthing.

TRENTON

Birthing Center at Beaumont Hospital – Trenton (formerly Oakwood Hospital)

5450 Fort St., Trenton 734-671-3950 • oakwood.org
Homey delivery rooms, couplet care, neonatal support services, education, lactation center, online baby photo gallery.



TROY

Beaumont Hospital – Troy Family Birth Center

44201 Dequindre Road, Troy 248-964-5000 • beaumont.edu
Private suites have the latest tech and amenities. NICU, dedicated natural birth suite, comprehensive post-natal care and support.

WARREN

St. John Providence Health Macomb-Oakland Hospital Birthing Center

11800 E. 12 Mile Road, Warren 586-573-5000 • stjohnprovidence.org/obstetrics
Eight private birthing suites host 110 births per month. Broad visiting hours, 52 obstetricians and family physicians on staff, on-site neonatologist. Tours available as part of prenatal education class.

WAYNE

Birthing Center at Beaumont Hospital – Wayne (formerly Oakwood Hospital)

33155 Annapolis St., Wayne 734-467-4266 • oakwood.org
Spacious, fully private suites, plus

Jacuzzi tubs/private showers, individual lighting/climate controls. Couplet care, online baby photo gallery, in-room refrigerators, entertainment centers, sleeper sofas.

WEST BLOOMFIELD

Henry Ford West Bloomfield Hospital Birthing Center

6777 W. Maple Road, West Bloomfield 248-325-1000
henryfordwestbloomfield.com
Has 15 private labor rooms with hydrotherapy tubs and special sinks for first bath. Special-care nursery, certified nurse-midwife options, in-room treatments from Vita wellness center.

WYANDOTTE

Henry Ford Wyandotte Hospital Birthing Center

2333 Biddle Ave., Wyandotte 734-246-6023
henryfordwyandotte.com
Suites equipped with hydrotherapy tubs, private showers, rocking chairs, large TVs and sleeper sofa. Specially trained staff, advanced tech available. Couplet care.

Prenatal Classes

Lamaze or HypnoBirthing? Breast-feeding or formula? There's so much to learn and consider before your little one arrives, and fortunately, you'll find plenty of resources in southeast Michigan to help you on your way. Our guide to prenatal classes includes everything from childbirth education to breast-feeding primers and even help with baby-care basics like diapering, sleep patterns and bathing. We'll also point you in the direction of classes just for dads and fitness programs to help you feel great after your bundle of joy makes his or her debut.

BREAST-FEEDING

Baby Basics

25 Jackson Industrial Drive,
Suite 500, Ann Arbor
734-834-7801 • babybasics.me
Breast-feeding classes with hand-
outs/brochures. \$45/group,
\$55/private in-home.

Beaumont Health System

Beaumont Hospital – Grosse
Pointe, 468 Cadieux Road
Beaumont Hospital – Troy, 44210
Dequindre Road
Beaumont Medical Center, Sterling
Heights, 44250 Dequindre Road
Beaumont Medical Center, West
Bloomfield, 6900 Orchard
Lake Road
PNC Center, 755 W. Big Beaver
Road, Troy
800-633-7377
classes.beaumont.edu
Learn how to get started, the
nutritional value of breast milk,
more. 6:30-9:30 p.m. Tuesdays
and Thursdays, 1-4 p.m. Satur-
days. \$35/couple.

Beaumont Hospital – Dearborn

(formerly Oakwood Hospital)
18101 Oakwood Blvd., Dearborn
313-593-7694 • oakwood.org
Taught by certified lactation
consultant. Covers proper latch,
pumping, breast milk storage.
Times vary. \$25/mom, free/dad.

Beaumont Hospital – Farmington

Hills (formerly Botsford Hospital)
28050 Grand River Ave.,
Farmington Hills
248-888-2500 • botsford.org
Breast-feeding educator/certified
lactation consultant covers bene-
fits, positions, pumping, storage,
more. 6:30-9:30 p.m. select
Mondays. \$35.

Beaumont Hospital – Trenton

(formerly Oakwood Hospital)
5450 Fort St., Trenton
734-671-3950 • oakwood.org
Discusses latching, positioning,
pumping and more. 1-3 p.m.
Saturdays. \$25/couple.

Beaumont Hospital – Wayne

(formerly Oakwood Hospital)
33155 Annapolis St., Wayne
734-467-4266 • oakwood.org
Offers in-depth information on
breast-feeding techniques. 4:30-
7:30 p.m. one Saturday/month.
\$25/couple.

Beautiful Beginnings Birth Services

Optimal Wellness Center, 3302
Crooks Road, Royal Oak
248-556-6361
michigandoula.com
Breast-feeding basics, dad's role,
more. Offered throughout year.
\$35/mom.

Center for the Childbearing Year, LLC

722 Brooks St., Ann Arbor
734-663-1523 • center4cby.com
Info on getting started, learning
about hunger cues, more. 9:30
a.m.-12:30 p.m. select Saturdays.
\$55/couple.

Crittenton Hospital Medical Center

1101 W. University
Drive, Rochester
248-652-5269 • crittenton.com
A registered nurse/certified
lactation consultant teaches.
Learn about positioning and latch,
pumping, more. Three hours.
Dates, times vary. \$30.

DMC Huron Valley Sinai Hospital

1 William Carls Drive, Commerce
248-937-3619 • hvsh.org
One-time class available Tuesday
evenings; offers strategies for
comfort and success, including
returning to work. \$25/mom and
support person.

DMC Hutzel Women's Hospital

3980 John R St., Detroit
888-DMC-2500 • hutzel.org
Led by a certified lactation con-
sultant. Covers getting started,
returning to work, pumping/
storage, more. 5:30-7:30 p.m.
one Thursday/month. Register.
\$15/couple.

Prenatal Classes

Henry Ford Macomb Hospital

15855 19 Mile Road,
Clinton Township
586-263-2410, 800-532-2411
henryfordmacomb.com
Lactation consultant teaches
about latch, milk supply, pumping,
more. 7-9 p.m. one Monday per
month. \$20.

Henry Ford West Bloomfield Hospital

6777 W. Maple Road,
West Bloomfield
800-746-9473 • henryford.com
Three-hour class focused on
breast-feeding techniques and
challenges. Take at least four
weeks prior to due date; second
class recommended after delivery.
\$25/couple.

Henry Ford Wyandotte Hospital

2333 Biddle Ave., Wyandotte
734-246-9601
henryfordwyandotte.com
Taught by a lactation consultant.
Covers proper latch, myths about
breast-feeding, more. 6-9 p.m.
one Monday/month. \$30/pair.

Lamaze Family Center Ann Arbor

2855 Boardwalk Drive,
Ann Arbor • 734-973-1014
lamazefamilycenter.org
Three-hour class. Breast-feeding
basics, nutrition, latching,
more. Typically Thursdays and
Saturdays. \$55.

Mom and Baby Shop

43000 W. Nine Mile Road,
Suite 303, Novi
313-444-2229
momandbabyshop.com
Focus on breast-feeding advan-
tages, techniques, nipple care,
diet considerations, more. 10
a.m.-noon one Saturday/month.
\$30/couple.

St. Joseph Mercy, Ellen Thompson Women's Health Center

5301 McAuley Drive,
Ann Arbor • 734-712-5800
stjoesannarbor.org
Focuses on the first two weeks
of breast-feeding, plus returning
to work, pumping, weaning and
more. Times vary. \$35/class,
free/partner.

St. Mary Mercy, Marian Women's Center

36475 Five Mile Road,
Livonia • 734-655-1100
stmarymercy.org/marianwomen-
scenterprograms
Expectant parents get breast-feed-
ing lessons from certified lactation
consultants from benefits to
techniques. 4-6 p.m. Thursdays.
\$25/couple.

University of Michigan Health System, Briarwood Center for Women, Children and Young Adults

400 E. Eisenhower Parkway,
Building 2, Suite B, Ann Arbor
734-232-2600 • uofmhealth.org
Families meet with a lactation
consultant for a 1.5-hour class
on breast-feeding basics, good
positioning, pumps and more.
Call for time, dates. \$20.

CHILDBIRTH EDUCATION AND PREPARATION

Baby Basics

Northeast Ann Arbor
734-834-7801 • babybasics.me
Learn about signs of labor,
comfort measures, pain man-
agement, what to expect after
delivery, more. Private and group
lessons; two couples needed for
group class. Group class \$180/
four weeks, \$150/one-two-day
condensed evening class,
\$240/private.

Beaumont Health System Childbirth Education

Beaumont Hospital – Grosse
Pointe, 468 Cadieux Road
Beaumont Hospital – Troy, 44210
Dequindre Road
Beaumont Medical Center,
Macomb Township, 15979 Hall
Road, Macomb
Beaumont Medical Center,
West Bloomfield, 6900 Orchard
Lake Road
PNC Center, 755 W. Big Beaver
Road, Troy
800-633-7377
classes.beaumont.edu
Learn to recognize and cope with
the physical and emotional chang-
es. Incorporates Lamaze. Taught
by registered nurse childbirth ed-
ucators. 10 a.m.-4 p.m. Saturdays
(two consecutive, or weeknights
in four consecutive). \$95/couple.

Beaumont Health System HypnoBirthing – The Mongan Method

Beaumont Medical Center, Sterling
Heights, 44250 Dequindre Road
PNC Center, 755 W. Big Beaver
Road, Troy
800-633-7377
classes.beaumont.edu
Learn tips for a safe, satisfying
birth through guided imagery,
special breathing, more. Five
weeks. \$220/couple.

Beaumont Health System

Natural Birth Workshop

PNC Center, 755 W. Big Beaver Road, Troy • 800-633-7377
classes.beaumont.edu
Practice positioning, breathing for labor/birth, comfort measures, more. 9 a.m.-5 p.m. Saturday or in three weeknight sessions. \$120/couple.

Beaumont Hospital – Dearborn

(formerly Oakwood Hospital)
18101 Oakwood Blvd., Dearborn 313-593-7694 • oakwood.org
Learn about stages of labor, use of medications, C-sections, more. One-day 9 a.m.-4:30 p.m. Saturday; four-day 7-9 p.m. Thursdays. \$65/series.

Beaumont Hospital – Farmington Hills

(formerly Botsford Hospital)
28050 Grand River Ave., Farmington Hills
248-888-2500 • botsford.org
Topics include stages of labor, managing discomfort and more. 7-9:30 p.m. Tuesdays or Wednesdays. \$75/series.

Beaumont Hospital – Trenton

(formerly Oakwood Hospital)
5450 Fort St., Trenton
734-671-3950 • oakwood.org
Two-day class. Breathing, medication, a birthing center tour, more. 9:30 a.m.-2:30 p.m. Saturday and 9:30 a.m.-1 p.m. Sunday; typically once per month. \$65/couple.

Beaumont Hospital – Wayne

(formerly Oakwood Hospital)
33155 Annapolis St., Wayne
734-467-4266 • oakwood.org

Relaxation, controlled breathing, role of the birth partner, stages of labor. 8:30 a.m.-3:30 p.m. Saturday and 8:30 a.m.-12:30 p.m. Sunday, one weekend/month. \$65/couple.

Beautiful Beginnings

Birth Services

Optimal Wellness Center, 3302 Crooks Road, Royal Oak
248-556-6361
michigandoula.com
Private, in-home birth classes cover everything moms-to-be need to know. By appointment. \$120.

Birthing By Calm

Mount Clemens, Royal Oak, Sterling Heights, Utica
248-506-8971
birthingbycalm.com
HypnoBirthing focusing on breathing, visualizing, more; plus nutrition, fourth trimester. Five two-and-a-half-hour classes. Private available. \$325/session (includes materials).

Crittenton Hospital

Medical Center
1101 W. University Drive, Rochester
248-652-5269 • crittenton.com
Four-week series covers end-of-pregnancy comfort, knowing when labor begins, what to bring to the hospital, medical options, more. Take two to three months before birth. \$85/series, \$75/online.

DMC Huron Valley Sinai Hospital

1 William Carls

Drive, Commerce
248-937-3619 • hvsh.org
Birth Awareness covers what to expect, medical interventions such as epidurals, more. Monday-Thursday evenings plus Saturday; weekly for four weeks. \$65/series.

DMC Hutzel Women's Hospital

3980 John R St., Detroit
888-DMC-2500 • hutzel.org
Classes are 8:30 a.m.-4:30 p.m. one Saturday/month with hour lunch break. Labor, comfort techniques, labor coach info, more. \$50/family.

Embracing Childbirth Education & Postpartum Services by

Karen Schroeder

Ferndale
248-398-8525, 248-765-1712
embracingbirth.com
Private, one-on-one classes begin at weeks 28-30 and teach the basics and beyond. 11 a.m.-1 p.m. or 1-3 p.m. Sundays. \$130/six weeks (includes book, handouts).

Garden City Hospital

6255 Inkster Road, Garden City
734-458-4330 • gch.org
Preps moms and coaches. Breathing, relaxation, massage, pain management, labor stages. 9 a.m.-3 p.m. one Saturday/month. \$50/couple.

Golden Touch Baby Concierge

1221 Bowers St., Suite 1752, Birmingham • 248-952-8320
goldentouchbaby

conciierge.com

The in-home “crash course” provides busy parents-to-be with everything they need to know. \$150/couple.

Henry Ford Health System

Corporate Offices

1 Ford Place, Detroit
313-916-1643 • henryford.com
Two-week series on stages of labor and delivery, relaxation and breathing, postpartum issues. 9 a.m.-1 p.m. Saturdays, monthly (check ahead). \$65.

Henry Ford Macomb Hospital

15855 19 Mile Road, Clinton Township • 800-532-2411
henryfordmacomb.com
Covers labor/delivery, labor-coping techniques and more. Take as a one-day course or a three-week series. Call for dates/times. \$65.

Henry Ford West

Bloomfield Hospital

6777 W. Maple Road, West Bloomfield
800-746-9473 • henryford.com
Three-week series, 6-9 p.m. Helps women and partners understand pregnancy and birthing. One-day version 8:30 a.m.-5:30 p.m. Saturdays; schedule three to four weeks prior to due date. \$65.

Henry Ford Wyandotte Hospital

2333 Biddle Ave., Wyandotte
734-246-9601
henryfordwyandotte.com
Great Expectations is an all-day class, 9 a.m.-5:30 p.m., held several Saturdays per month.

Prenatal Classes

An intro is on Monday and includes a dinner that lets parents mingle. \$65.

Lamaze Family Center Ann Arbor
2855 Boardwalk Drive,
Ann Arbor • 734-973-1014
lamazefamilycenter.org
Four-week, two-week and one-day formats at a variety of days and times (\$190); “Newborn Know-How” one Thursday evening per month (\$55).

Life Blooms Birth Services Livonia
248-302-5339 • lifebloomsbirth-services.weebly.com
Natural childbirth classes, at an in-home classroom, meet weekly for five weeks. \$150/session (mom, support person). Private classes available.

Nature's Playhouse
318 W. Nine Mile Road,
Ferndale • 248-955-3219
naturesplayhouse.com
Five 2 1/2-hour classes cover HypnoBirthing – The Mongan Method, using relaxation, breathing, visualization and natural instincts. 7-9:30 p.m. Mondays. \$275; \$50 deposit.

Peaceful Birthing
226 Walnut Blvd., Rochester
248-429-9070
yourpeacefulbirthing.com
HypnoBirthing combines relax-

ation, breathing and visualization to ease pain and prep women and their partners for birth. Five two-and-a-half-hour classes. Times vary. \$325.

St. John Hospital & Medical Center
22101 Moross Road, Detroit
866-501-3627
stjohnprovidence.org
Three-week session runs 6:30-9 p.m. Tuesdays; one-day 9 a.m.-5 p.m. Saturdays. Helps prepare for labor, birth, bonding and breast-feeding. \$75.

St. Mary Mercy, Marian Women's Center
36475 Five Mile Road, Livonia
734-655-1100
stmarymercy.org/marianwomen-scencenterprograms
Taught by labor and delivery nurses. Focuses on stages of labor, anesthesia and medications, support. 9 a.m.-3 p.m. Saturday. Call for pricing.

DADS ONLY

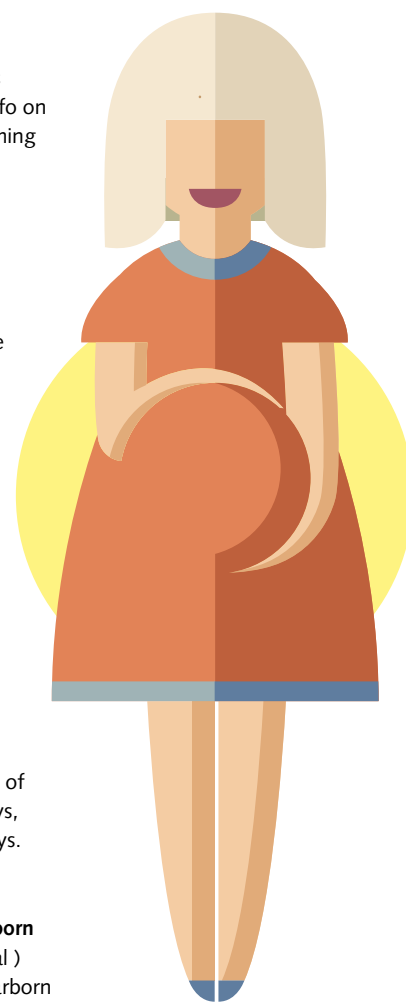
Beaumont Health System
Beaumont Hospital – Troy, 44210 Dequindre Road
PNC Center, 755 W. Big Beaver Road, Troy • 800-633-7377
classes.beaumont.edu
One-session class taught by a registered nurse and experienced dad. \$35/dad.

St. Joseph Mercy, Ellen Thompson Women's Health Center
5301 McAuley Drive,
Ann Arbor • 734-712-5800
stjoesannarbor.org
Boot Camp for New Dads is taught by a father; offers info on parenting, baby care, becoming a family, more. 9 a.m.-noon some Saturdays. \$30.

INFANT CARE

Beaumont Health System
Beaumont Hospital – Grosse Pointe, 468 Cadieux Road
Beaumont Hospital – Troy, 44210 Dequindre Road
Beaumont Medical Center, Sterling Heights, 44250 Dequindre Road
Beaumont Medical Center, West Bloomfield, 6900 Orchard Lake Road
PNC Center, 755 W. Big Beaver Road, Troy
800-633-7377
classes.beaumont.edu
One-session Baby Care & Safety covers first six weeks of life. 6:30-9:30 p.m. Tuesdays, Wednesdays, select Mondays. \$35/couple.

Beaumont Hospital – Dearborn
(formerly Oakwood Hospital)
18101 Oakwood Blvd., Dearborn
313-593-7694 • oakwood.org
Class (9 a.m.-noon some Saturdays and 6:30-9:30 p.m. some Wednesdays) on basics, newborn senses, sleep patterns, feeding cues. \$30/couple.



Prenatal Classes

Beaumont Hospital – Trenton
(formerly Oakwood Hospital)
5450 Fort St., Trenton
734-671-3950 • oakwood.org
Three-hour class on the first three months. 9 a.m.-noon Saturdays. \$30/couple.

DMC Hutzel Women's Hospital
3980 John R Road, Detroit
888-DMC-2500 • hutzel.org
Baby sleep patterns, infant safety, bathing, immunizations, more. 6-8 p.m. once every other month. \$20/family.

Henry Ford West Bloomfield Hospital
6777 W. Maple Road,
West Bloomfield
800-746-9473 • henryford.com
Offerings for moms and partners alternates between infant-care fair and classes. 6-8:30 p.m. on Wednesdays; check ahead. \$25.

St. Joseph Mercy Ann Arbor
5301 McAuley Drive, Ypsilanti
734-712-5800
stjoesannarbor.org
Basic newborn care in the first two weeks. 7:30-9:30 p.m. various dates. \$35/couple.

St. Mary Mercy, Marian Women's Center
36475 Five Mile Road, Livonia
734-655-1100
stmarymercy.org/marianwomen-centerprograms

Infant care, safety, signs of illness, more. 4-7 p.m. some Thursdays. \$35/couple.

University of Michigan Health System, Canton Health Center
1051 N. Canton Center Road, Canton
734-844-5400 • uofmhealth.org
Baby Care Basics offers a head-to-toe look at newborn care. 6-8 p.m. one evening per month. \$15/parent.

University of Michigan Health System, East Ann Arbor Health and Geriatrics Center
4260 Plymouth Road, Ann Arbor
734-647-5715 • uofmhealth.org
Baby Care Basics covers bathing, diapering and more. 10 a.m.-noon third Saturdays. Take at beginning of third trimester. \$15/parent.

PRENATAL EXERCISE

Aqua Moms
At Beverly Hills Club, 31555 Southfield Road, Beverly Hills
800-633-7377
classes.beaumont.edu
A 12-week water aerobics class for pregnant women. By Beaumont. 7:30-8:20 p.m. Tuesdays and Thursdays. \$115/person.

Earthside Prenatal Yoga
Various locations

586-506-6730
earthsideprenatalyoga.com
Prep your body, mind and spirit. \$90/six-week session. Mom/baby class also available.

MaMaTone Class Series
Macomb, Oakland, Wayne counties
248-821-2569
mamatoneusa.com
Ten-class series by BirthTLC LLC instructor Gloria Cunningham. Uses dance, visualization, yoga and sound. \$25/one class, \$100/five, \$180/full.

Yoga Focus Ann Arbor
Eastover Professional Center, 1527 Eastover Place, Suite 5, Ann Arbor
734-668-7730
yogafocusannarbor.com
Prenatal yoga poses to help with comfort, balance and prep for birth. \$18/drop-in.

Yoga Moms
Beverly Hills Club, 31555 Southfield Road, Beverly Hills
SOLA Life & Fitness, 1555 E. South Blvd., Rochester Hills
800-633-7377
classes.beaumont.edu
Six-week series that may help reduce back pain, swelling and fatigue. By Beaumont. 7-7:50 p.m. Thursdays and 10-10:50 a.m. Saturdays. \$70/person.

POST-PREGNANCY FITNESS

Fit4Mom Ann Arbor
Briarwood Mall, County Farm Park, Lamaze Family Center Ann Arbor, Washtenaw Community College, more
annarbor.fit4mom.com
"Stroller Strides," "Stroller Barre," "Body Back" and "Run Club." Prices/times vary.

Marlene McGrath Yoga
At Inward Bound Yoga, 1420 Hill St., Ann Arbor
marlenemcgrathyoga.com
Postnatal yoga (with baby). 11 a.m.-12:30 p.m. Wednesdays. \$15/class, \$65/five.

Northville Yoga Center
410 E. Main St., Northville
248-449-YOGA
northvilleyogacenter.com
Mom-baby yoga class open to 6 weeks-active crawlers. \$14/walk-in; \$130/10 classes.

The Little Gym
4301 Orchard Lake Road, West Bloomfield • 248-851-1500
thelittlegym.com/westbloomfieldmi
Classes for 4 months-plus like mom-and-me gymnastics. \$80/month, \$40/annual fee.

Doulas

Many women opt to add a doula to their birth plan. Doulas offer non-medical support to the mama before, during and after childbirth. "Doula" comes from ancient Greek and means "a woman who serves." These experts provide non-biased information, physical and emotional support to the mom. Many obtain their certification through Doulas of North America (DONA) or the Childbirth and Postpartum Professional Association (CAPPa). Meet a few here.

Able Bellies Doula Care Sirène-Rose Lipschutz

Oakland, Washtenaw,
Wayne counties
307-920-1030 • ablebellies.com
\$750/birth doula, \$20/hour (plus
\$10/day over 25 miles)
DONA-trained birth doula and
CAPPa-trained postpartum doula.
Plus adoption doula care, birth tub
rental, childbirth education classes.

Ashleigh Cornell, LMT

Washtenaw County
734-560-2938
annarbordoulas.com
\$600/birth doula,
\$20/hour postpartum
Birth and postpartum doula,
pre-/postnatal massage therapist;
placenta encapsulation.

Ask the Doula, LLC Bonnie Miller RN, BSN

Macomb, Oakland, Washtenaw
and Wayne counties
313-538-7222 • askdoula.com
\$800/start package
Birth education classes; doula, mo-
nitrice, private duty labor support
nurse specializing in vaginal birth
after C-sections.

Beautiful Beginnings Doula Services, Stacy Thompson, CLD

Macomb, Oakland,
Washtenaw, Wayne counties
248-556-6361
michigandoula.com
\$900-\$2,000/doula packages,
\$200/placenta encapsulation
(included in some packages)
CAPPa-certified. Prenatal and
labor massages, belly casting, edu-
cation, placenta encapsulation.

Birth & More Wellness Kristin Lacy

Oakland, Washtenaw, Wayne
counties • 248-739-0565
birthandmorewellness.com
\$1,000/birth doula,
\$25/hour postpartum
Over 16 years in the field; assists
in birth, postpartum. Also a mo-
nitrice, midwife with experience in
special needs. Classes, teas, baths.

BirthTLC LLC Gloria Cunningham, DEM

Macomb, Oakland,
Wayne counties
248-821-2569 • birthtlc.com
\$1,000/doula package, \$1,500/
monitrice, \$150-\$290/classes
Offers doula, monitrice and child-

birth education services featuring
MaMaTone classes and Birth
Partner Bootcamp.

Bright Horizons Doula Nicole Fobare

Macomb, Oakland, Wayne
counties • 586-215-6748
brighthorizonsdoula.com
Contact for rates
Certified birth and postpartum
doula. Social worker; specializes in
postpartum depression.

Cara Genisio

Washtenaw County
734-478-7154
annarbordoulas.com
\$800/birth doula
DONA-certified birth doula of
seven years. Helps develop a
birth plan, offers hands-on labor
and emotional support; provides
referrals as needed.

Deep Waters & Postpartum Services, Courtney Blackwell

Oakland, north Wayne counties
248-396-3755
43twodoula.weebly.com
\$600/birth doula, \$20-\$35/hour
postpartum
Has over 14 years of newborn

care experience. Student midwife.
Placenta encapsulation, belly
casting, child care, more.

Delighted to Doula Prinscilla Moore, CPD

Oakland, Macomb counties
248-445-0126
delightedtodoula.com
Call for pricing
CAPPa-certified birth doula,
postpartum/lactation educator.
Four-plus years experience.

Dory Jolin

One hour from Pontiac
248-390-9293 • douladory.com
\$1,000/birth doula
Professional doula, mom of three,
reiki master, counselor; trained
in HypnoBirthing.

Dream a Little Dream Doula Jen Henderson

One-hour radius of Clarkston
248-895-0499
[dreamalittledreamdoula.
weebly.com](http://dreamalittledreamdoula.weebly.com)
\$900-\$930/birth doula
This DONA-trained birth doula
and mom of four has experience
in both home and hospital births.

Doulas



Elizabeth Satterley LCCE, CD
Washtenaw County
734-646-0223
annarbordoulas.com
\$800/birth doula
DONA- and Lamaze-certified,
Satterley has worked in the birth
world nine years.

Embracing Birth Childbirth & Postpartum Services

Karen Schroeder
Oakland, parts of Macomb,
Wayne counties
248-398-8525, 248-765-1712
embracingbirth.com
\$20/hour postpartum
DONA trained postpartum doula
with multiples experience; lacta-
tion consultant, childbirth educa-
tor, infant massage instructor.

Erin Barnes Doula Services

Oakland, Macomb, Wayne,
Washtenaw counties
248-840-3269
erinbarnesdoulaservices.com
\$1,000/birth doula; \$25-\$30/
hour postpartum (minimum six
day hours/week or night), \$150-
\$200/placenta encapsulation
Six years of experience in prenatal,
birth and postpartum. Part of
Southeast Michigan Doulas.

Guided Passage, LLC

Laurel Miller
30 miles of Ferndale
248-812-9459
guidedpassage.com

\$175-plus/placenta encapsulation
Placenta encapsulation; trained
apprentice midwife and childbirth
educator since 2012.

Heartsong Doula Services

Diana Jo Thornton
60-mile radius of Commerce
989-858-0748
heartsongdoulaservices.com
\$400-\$1,000/birth doula,
\$25/hour postpartum,
\$200/placenta encapsulation
DONA-trained doula with five
years of experience. Placenta en-
capsulation, too. Part of Southeast
Michigan Doulas.

Hello Baby Birth Services

Nicole Lennox
Oakland, Genesee,
Lapeer counties • 248-535-7142
helloworldbabybirth.com
\$550-\$1,200/birth doula, costs
vary/placenta encapsulation
Birth services, massage therapy
and placenta encapsulation.

Jodi Graves, AAHCC

Washtenaw, Oakland counties
734-834-6751
annarbordoulas.com
\$650-\$1,200/birth doula
Birth doula since 1999. Master's
in naturopathy; teaches Bradley
Method of Natural Childbirth.

Jodie Hughes

Washtenaw County
734-576-3746
annarbordoulas.com
\$100/consultation, \$20/hour (10
hour total minimum)
Postpartum doula, childbirth edu-
cator, Ann Arbor native.

Julie Morrison

Washtenaw County
734-417-0500
annarbordoulas.com
Call for prices
Postpartum doula. Also offers
photography services.

Life Blooms Birth Services

Carmen Malcolm
30-mile radius of Livonia
248-302-5339 • lifebloomsbirth-
services.weebly.com
\$700/birth doula,
\$30/hour postpartum
Certified birth/postpartum doula,
childbirth educator, breast-feeding
counselor, placenta encapsulator,
birth photographer, mom of two.

Michigan Placenta Encapsulators

Southeast Michigan, beyond
248-812-9459 • michiganplacen-
taencapsulators.com
\$175-plus/encapsulation
Helps match you with an encapsu-
lator in your area.

Mitten Made Doulas

**Gina Hodgson, Margaret
Rodeghier, Adrienne Walker**
50-mile radius of Utica
248-702-5217
mittenmadedoulas.com
\$800/birth doula, \$1,400/dual
doula, \$225/encapsulation
Helps with birthing, visual birth
plan, education and more.

Mother Bloom

Anna Fernandez, CPM, MH
Ann Arbor, Detroit, more
734-395-5868
motherbloom.com
\$850/birth doula (two prenatal
visits, on-call, one postpartum)
Part of Tree Town Doulas, this
certified professional midwife, master
herbalist and doula provides
homebirth services.

Doulas

Pathway Partner

Jasmin Cromwell, NC, CPD, CYI
Macomb and Oakland counties
586-201-0781
pathwaypartner.com
\$25/hour postpartum
Has more than 11 years experience as a postpartum doula. Helps with relaxation, meditation.

Pregnancy Arts, Deb Rhizal

Washtenaw County
734-604-1841
pregnancyarts.com
\$175/classes, call for doula
Birth/postpartum doula services plus classes. DONA-certified; doula since 2003. Wellness coach, level-three reiki practitioner.

Sacred Roots Services, LLC

Ann Arbor, Milan, Saline, Ypsilanti areas • 734-288-7784
sacredrootsservices.com
Contact for rates
Includes Katy Gladwin, a birth/postpartum doula and educator,

and birth doula Ariana Riegel. Works with two photographers.

Sacred Rose Birthing Services – Cynthia Jackson

Wayne, Macomb, Oakland, Washtenaw counties
313-971-7324
sacredrosebirthing.com
\$700/birth doula
DONA doula since 2005. Trained childbirth educator. Experience with medicated, non-medicated, multiples and VBAC births.

Support for Growing Families, LLC, Catherine Fischer, MA, CPD

Washtenaw County; other counties with travel fee
734-395-5244
supportforgrowingfamilies.com
\$850/birth doula, \$25/hour postpartum (three hours/day minimum)
This DONA-certified doula, who holds an education master's degree, also offers parenting classes. Affiliated with Tree Town Doulas.

Sweet Dreams Birth Services

Missy Kacy
248-464-1639
sweetcarebirthservices.com
\$800/birth doula, \$150-\$200/placenta encapsulation
This birth doula is a CAPPa member and mom of four.

The After Baby Lady Jill Reiter

Macomb, Oakland, Wayne counties • 586-604-1446
theafterbabylady.com
\$200/three hours day, \$300/overnight (10 p.m.-6 a.m.)
CAPPa and DONA-certified postpartum doula. Has four kids.

The Mother's Helper Doula Martha Baum

Washtenaw, Wayne, Monroe counties • 734-347-2560
themothershelperdoula.com
\$950/birth services
DONA- and labor-certified. Has 17-plus years of experience before, during and after birth.

Tomorrow's Happiness Birth Services, Kristina Murray

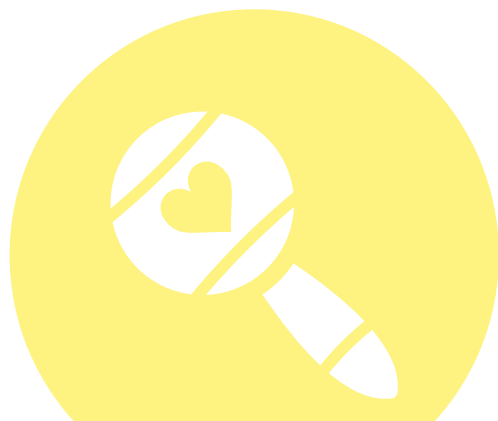
Oakland, Washtenaw, Wayne, Livingston counties
248-790-0419
\$800-plus/birth doula
Offers birth assistance, placenta encapsulation, birth tub rentals.

Wadada Massage & Doula Services, Jahmanna Selassie

Oakland, Macomb, Wayne, Washtenaw counties
wadadamassagedoula.com
\$1,000/birth services, \$65-\$85/massage
Apprenticing certified professional midwife; with two other doulas as part of Southeast Michigan Doulas. Pre-/postpartum massage.

Woven in Love Maternity Services, LLC, Eileen Denomme

Macomb, Oakland, Wayne, St. Clair, Lapeer counties
586-337-0393
michiganmidwife.com
Call for rates
More than 24 years experience. Certified professional midwife, monitrice.



Lactation Consultants

Breast-feeding is very natural, but for some moms something natural can be so hard. Learning the correct latch and hold takes time, patience and practice. Luckily, there are professionals trained to make this an easy and comfortable experience. And since every baby is not the same, these pros know how to help new and veteran mommies – whether by phone or in person. For one-on-one care, arrange an appointment with a consultant, independent and/or hospital-based. Many are International Board Certified Lactation Consultants (IBCLC), too.

ALLEN PARK

Mary Lynn Harrison, RN, IBCLC

313-928-8253

Rates/hours at request
Nursing instructor does private instruction on breast-feeding, at location or in-home.

ANN ARBOR/YPSILANTI

Amy Slotten, RN, IBCLC, RLC

Ann Arbor, in-home visits to Washtenaw/nearby counties
734-945-4765

Rates/hours at request
Has both private practice and hospital experience.

Barb Martinez, RN, IBCLC

734-645-1351

Rates/hours at request
Offers Medela pumps to rent or buy. Will travel to you on evenings, weekends.

Breastfeeding Guidance – Keleigh Lee, MS, IBCLC

9258 Abbey Lane, Ypsilanti
734-218-0348

www.bfguidance.com
\$100/in-person, \$35-\$75/follow-up (in-person or phone)

Offers in-home support and group classes at Indigo Forest in Ann Arbor (\$30/start).

IHA Ann Arbor/Ypsilanti

IHA Associates in Gynecology & Obstetrics – Arbor Park: 4936 W. Clark Road, Suite 101, Ypsilanti,
734-434-6200

IHA Child Health – Ann Arbor:
3100 E. Eisenhower Parkway,
Suite 100, Ann Arbor,
734-971-9344

ihacares.com
Contact for availability, rates
Staff includes Kelly Strickler, CPNP, IBCLC, and PaoLin Chi, MD, CLC, in Ann Arbor; Sherrill Black, IBCLC, LPN OB/triage specialist and Marissa DaSilva, CPNP, in Ypsilanti.

Indigo Forest – Beth Barbeau, BS

4121 Jackson Road, Ann Arbor
734-994-8010
theindigoforest.com

9 a.m.-5 p.m. Monday-Tuesday, Thursday; 10 a.m.-6 p.m. Wednesday, Friday-Saturday
\$30/consultations (30 minutes)
Barbeau and team offer consults, classes, pump rentals, a nursing café and more.

Kathy Malone, RN, IBCLC

Ann Arbor, Brighton areas
810-229-3328

Offers home visits on weekends and evenings.

Lamaze Family Center

2855 Boardwalk Drive,
Ann Arbor • 734-973-1014

lamazefamilycenter.org
\$55/three-hour class, Thursdays, Saturdays (dates vary)
Deborah Busick, IBCLC, MS, RD,
runs in-house support groups and pre-baby classes.

Marilee Woodworth, BS, IBCLC

Ann Arbor, exclusively meets in-home; Macomb, Oakland, Washtenaw, Wayne, Livingston counties • 734-995-3155

Rates/hours at request
Private in-home consultations.
Also at Joseph Mercy Hospital.

St. Joseph Mercy Breastfeeding Clinic

5301 McAuley Drive, Ypsilanti
734-712-6357 • stjoesannarbor.org/breastfeeding-services
8 a.m.-11 p.m. Monday-Saturday, 8 a.m.-4 p.m. Sunday; daily inpatient/phone
\$85/initial, pro-rated/after

Prenatal classes, programs, private appointments. All consultants are IBCLC.

The Breastfeeding Center of Ann Arbor – Barbara Robertson, MA, IBCLC, RLC

726 Brooks St., Ann Arbor
734-975-6534 • bfcaa.com
Noon-4 p.m. Monday-Wednesday, Friday-Saturday; home visits by appointment
\$125/initial in-office
With 17 years experience, Robertson is a pro offering support groups, pre- and post-natal education, more.

University of Michigan Medical Center Breastfeeding Clinic

Briarwood Center for Women, Children and Young Adults
400 E. Eisenhower Parkway, Building No. 2, Suite B, Ann Arbor
734-232-2600
uofmhealth.org/our-locations/briarwood-wcya
8 a.m.-6 p.m. Monday-Tuesday; 8 a.m.-5 p.m. Wednesday-Friday
Rates at request
Lisa Hammer, MD, IBCLC (director) and other lactation consultants offer assistance.

CANTON

IHA Pediatric Healthcare – Canton
49650 Cherry Hill Road,
Suite 210, Canton
734-398-7899 • ihacares.com
Contact for availability, rates
9 a.m.-noon weekday/walk-in
Wendy Storey, CPNP, IBCLC, and
Patricia Reckling, CPNP, IBCLC,
are ready to help.

CLARKSTON

**Professional Breastfeeding
Support, LLC**
30-mile radius of Clarkston 248-
795-1984 (9 a.m.-9 p.m.)
professionalbreastfeedingsupport.
com
\$120/initial, \$80/follow-up
Get assistance from founder Pam
Anzicek, MSN, RN, IBCLC and
Kristina Crosty, RD, IBCLC.

CLINTON TOWNSHIP

**Henry Ford Macomb Hospitals
Lactation Services**
15855 19 Mile Road, Clinton
Township • 586-263-2527
henryford.com
Rates/hours at request
Marie Basco, RN, IBCLC, is on
hand for inpatient and outpatient
services. Rayleen Bradley, RN,
IBCLC, handles classes (call 586-
263-2410).

COMMERCE

**Huron Valley-Sinai Hospital-
Harris Birthing Center**
1 William Carls Drive,
Commerce • 248-937-5057
hvsh.org/harrisbirthingcenter
\$25/couple classes
Lactation consultants offered
to moms who deliver here;
open-to-public classes offered
select Tuesdays.

DEARBORN

Beaumont Hospital – Dearborn
(formerly Oakwood Hospital)
18101 Oakwood Blvd.,
Dearborn • 313-593-5929
oakwood.org/lactation
Rates/hours at request
One-on-one help from
lactation consultants.

DETROIT

**DMC Sinai-Grace Hospital
Lactation Service**
6071 W. Outer Drive, Detroit
313-966-1268 • sinaigrace.org
In-office hours at request
Free monthly support group 6-8
p.m. last Mondays.

**Henry Ford Hospital
Lactation Services**

2799 W. Grand Blvd., Detroit
313-916-8363 • henryford.com
Free inpatient consultations at
various times, Monday-Friday
Marie Bosco RN, BSN, IBCLC
provides inpatient services. A
prenatal class and support group
meet once a month. Register at
800-746-9473.

**St. John Hospital
& Medical Center**

The Nurturing Nook, fifth floor,
22101 Moross Road, Detroit
313-343-3146 • stjohnprowi-
dence.org/breastfeeding
Rates/appointments at request
Award-winning clinic with lac-
tation experts. Consultations 45
minutes to an hour.

DEXTER

Lisa Hartmann BSW, IBCLC
Home visits in Ann Arbor/
Washtenaw and western
Wayne counties
734-846-1922
Rates/hours at request
Has been helping new moms
for years.

FARMINGTON HILLS

**Beaumont Hospital – Farmington
Hills** (formerly Botsford Hospital)
28050 Grand River Ave.,
Farmington Hills
248-471-8471
botsford.org/breastfeeding
Hours vary, Monday-Friday
Kristie Stasinski, RN, IBCLC and
Elaine Webber, DNP, PNP-BC,
IBCLC can help. \$35/three-
hour classes.

GROSSE POINTE

**Beaumont Hospital – Grosse
Pointe Shery L. and David B.
Cotton, M.D., Family Birth Center**
468 Cadieux Road,
Grosse Pointe • 313-473-1000
beaumont.edu
Rates/hours at request
Learn how to initiate and maintain
breast-feeding and more.

LIVONIA

Life Blooms Birth Services
30-mile radius of Livonia (parts of
Oakland, Wayne counties)
248-302-5339
lifebloomsbirthservices.weebly.
com/lactation-counseling.html
\$75/consult, \$60/private class
Doula Carmen Malcom offers in-
home lactation assistance.





NOVI

Providence Park Hospital

Labor and delivery, third floor, 47601 Grand River Ave., Novi 248-465-3887 • stjohnpvidence.org/breastfeeding Rates/hours at request Provides access to skilled specialists who help moms nurse.

ORTONVILLE

Nurturing Naturally, LLC – Jillian M. Malan, IBCLC

Based in Ortonville, serves northern Oakland, southern Genesee counties 248-627-5893 nurturingnaturallyllc.com \$115/two-hour newborn consultation, \$40/group classes Get specialized in-home assistance.

ROYAL OAK

Beaumont Hospital – Royal Oak 3601 W. 13 Mile Road, Royal Oak • 248-898-0599

beaumont.edu

3-11 p.m. daily Phone consults/outpatient help with lactation consultants, breast pump rentals, more.

SOUTHFIELD

Providence Park Hospital, Southfield Campus

Family care unit, 16001 W. Nine Mile Road, Southfield 248-424-2799 • stjohnpvidence.org/breastfeeding Rates/hours at request Several consultants. Support groups, one-on-one instruction. Breast pumps, more.

STERLING HEIGHTS

Breastfeeding Specialists, Inc. – Anne F. Norton-Krawciw, R.Ph., IBCLC, RLC

In-office or in-home, Macomb, Wayne counties 586-939-8378 10 a.m.-6 p.m. Monday-Friday

by appointment Rates at request For 25-plus years, she's helped moms with nursing and more.

TROY

Beaumont Hospital – Troy

44201 Dequindre Road, Troy 248-964-6455 beaumont.edu 8:30 a.m.-5 p.m. daily Rates at request Inpatient lactation/phone help, breast-feeding education. Also pumps, nursing bras, more.

In-Home Lactation Specialists, LLC – Brandy Walters, BBA, IBCLC

In, around Oakland County 248-952-7551 • inhomelactation-specialistsllc.com Rates/hours at request This counselor of 14 years empowers moms.

WEST BLOOMFIELD

Henry Ford West Bloomfield Hospital

6777 W. Maple Road, West Bloomfield 248-325-0047 • henryford.com 8 a.m.-5 p.m. Monday-Friday Rates at request Four consultants: Julia Gragg, RN, IBCLC; Trish Klassa, RN, MSN, IBCLC; Gayle Yerge-Cole, RNC, BS, IBCLC; and Rebecca Paul, MOTR/L, IBCLC. Support group 6-8 p.m. first Mondays, second Tuesdays.

WESTLAND

Caring Consults – Rosa Emeigh, IBCLC

In-home consultations in metro Detroit • 734-326-0355 Rates/hours at request Clinical nursing instructor at area colleges and lactation consultant at Providence Hospital; offers private instruction.

WYANDOTTE

Henry Ford Wyandotte Hospital – Nature's Path

2333 Biddle Ave., Wyandotte 734-246-7575 henryfordwyandotte.com 7 a.m.-3:30 p.m. daily Rates at request Expert consultants, breast pump rentals, more. Classes 6 p.m. one Wednesday per month (\$20).

Photographers

Kids go from infants to toddlers in the blink of an eye. Luckily, those precious moments can be easily preserved with southeast Michigan's talented photographers. Whether you want to remember your baby bump, sweetly snoozing newborn or tyke's gummy grin, this list can match you with the perfect photog to capture your moments in a creative, edgy way that works for you. *Note: Extra fees may apply for travel. Some include prints with session costs and others don't; also, most rates are just for starters. And for newborns: It's always best to call several months in advance!*

Affordable Reflections Photography

Based in Chesterfield Township, on location • 586-648-8030
affordableReflections.com
\$125/session start
Comfortable, laid-back sessions at a place you choose.

Amy Kimball Photography

Pleasant Ridge studio, Ann Arbor farm studio or on location
248-658-8037
amykimballphotography.com
\$150-\$600/sessions
Newborn, maternity. Baby fussy? Reschedule for free.

Andrea Peardon Photography

Royal Oak studio or on location
586-612-5042
andreapeardonphoto.com
\$150/full session start,
\$200/newborn, \$40/single print
Newborn and baby photography.

Angela Coventry Photography

Auburn Hills studio or on location • 248-505-1696
angelacoventry.com
\$100/in-studio start, \$135/on location, \$20-\$180/prints
Photographs newborns, babies, toddlers and families.

Anima Dolce Photography

Based in Waterford, on location • 616-813-6481
animadolce.com
\$300/session start
Kristen Hines captures baby's "sweet soul."

Baby Love Photography

Based in Royal Oak, on location
248-506-2547
babylovephotography.com
\$500/session start
Lisa Marie loves maternity, newborns, babies up to age 1.

Bella Baby Photography

Southeast Michigan, on location • 877-817-8830
bellababyphotography.com
Free/hospital photo session; contact for other rates
Kelly Billington is well-known in hospital portraiture.

Beautiful Beginnings

Portrait Design

Based in St. Clair Shores, on location • 586-899-8692
beautifulbeginningphotography.com • \$100/maternity, \$150/newborn, \$200/both, more
Erin Southerland snaps natural-light newborn images.

Black Slate Photography

Based in Clarkston, on location
blackslatephotography.com
\$150/session start, \$20-plus/print, \$60/art pieces
Bright, simple shots of your newborn, child and family.

Bloom Photography

Based in Plymouth, on location
734-564-4866
mybloomphoto.com
\$140/newborn session, \$125/child, \$20-plus/prints
Kelly Doneth strives to capture real moments candidly.

Capture a Moment Photography

Mount Clemens studio or on location • 586-646-8189
captureamomentphoto.com
\$175/family start, \$275/newborn
Pair of photographers, moms and long-time friends.

Cheryl Hall Photography

Dexter studio or on location
734-426-8223 • studiochp.com
\$350/start weekdays, \$450/weekends, \$75/custom prints
Child and baby shots, plus pregnancy, family and more.

Chin Azzaro

Ypsilanti studio or on location
734-929-2498 • chin-azzaro.com
\$300/family portrait, more
This husband-wife duo offers an edgy, modern look.

Courtney Sprague Photography

Based in Farmington Hills, on location
courtneysprague.com
\$300/newborn start
Uses her perfectionist's eye to create amazing portraits.

Delicate Dewdrops Photography

Ann Arbor, metro Detroit areas
734-634-2325
delicatedewdrops.com
\$700-\$1,300/typical total
Holly Goodwin works with newborns, babies, kids.

Frameable Faces Photography

West Bloomfield studio or on location • 248-790-7317
frameablefaces.com

\$250/in-studio start, \$350/on location, \$1,150/baby plan
Detail-oriented Ally Cohen snaps infants, kids, more.

Image33 Photography

Ann Arbor area, on location
734-652-0220
image33photography.com
\$175/family, newborn, maternity, \$450/birthing
With natural light, Mary Kerkes highlights baby's every feature.

Jennifer Hosking Photography

Mount Clemens studio or on location • 586-913-1871
jenniferhoskingphotography.com
\$125/newborn session, \$100/baby in-studio, \$145/on-site
A mom herself, Hosking loves capturing babies on film.

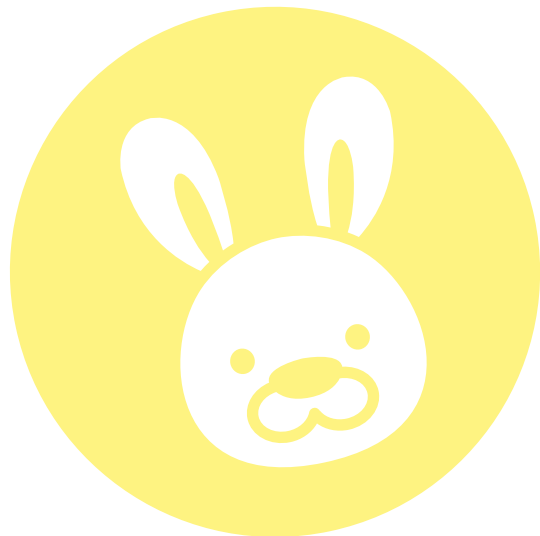
Kai Davis Photography

Livonia studio or on location
248-508-3229
onlinepictureproof.com/kaidavisphotography • \$200/newborn start, \$350/bump-to-baby
This mom loves bright colors and aims for candid moments.

Kat Foley Photo

Saline studio or on location
734-904-0070
katfoleyphoto.com
\$125/weekday family, \$175/weekend, more
She has an eye for shots that reflect personalities.

Photographers



Kristin Greenwald Photography

Based in Birmingham, on location • 586-405-7179
kristingreenwaldphotography.com
\$500/session, \$25/prints, more
Uses natural light to capture your family and new addition.

Lemonade Photos

Based in Warren, on location 586-822-2809
lemonadephotos.com
\$100/newborn session, \$60/maternity, family
This trio offers timeless, creative family shots.

[lifeonpaper] Photography by Bri Mason

Based in Canton, on location 734-624-6903
lifeonpaperphoto.com
\$250/kids, families, maternity start, \$350/newborn
Relaxed, natural-light style photog creates classic images.

Lil Sweet Pea Photography

Based in Northville, on location • 248-962-3740
lilsweetpeaphotography.com
\$150-\$325/start

Amy Porter is a pro at creating a kid-friendly environment.

Lisa Carmody Photography

Based in Northville, on location • 734-629-7242
lisacarmodyphotography.com
\$300/family, child, maternity start, \$400/newborn
Brings a fun, fresh approach to custom family portraiture.

MAK Photography

Based in Royal Oak, on location • 773-931-8962
makpics.com
\$295/start, \$375/newborn
Kelly Rae Rama snaps natural moments in a simple, fun way.

Mary Beth Photography

Based in Rochester, on location • 248-563-1207
marybethphotography.com
\$275/babies, children, maternity start, \$500/newborn
Background in journalism and graphic design.

Melissa Mooradian Photography

Wixom studio or on location 810-623-1231 • melissamooradianphotography.com

Contact for rates

Get fun, clean and colorful portraits of your rug rat.

Mishka Photography

Royal Oak studio or on location • 248-214-5612
mishkaphotography.com
\$200/in home, \$175/in studio, \$300/minimum print order
Andrea Mychalowych captures kids' natural beauty.

Naturally Photography by Monni

Sylvan Lake studio or on location • 248-977-5140
naturallymonni.com • \$325/start
This "image maker" is ready to capture your milestones.

Nicole Rollin Photography

Auburn Hills studio or on location • 248-275-1517
nicolerollinphotography.com
Contact for rates
Experienced photographer offering artistic shots.

Noel Kelley Photography

Plymouth studio or on location 734-262-4350 • noelkelley.com
Contact for rates
She's an ace at goofing around to create genuine laughs.

{Photography} by Trudi Lynn

Based in Canton, on location 734-812-8301
photographybytrudilynn.com
\$175/newborn, \$150/maternity, \$300/minimum print order
Captures motherhood. Prints, albums, cards, more.

Pierce Street Portraits

Birmingham studio or on location • 248-646-6950
piercestreetportraits.com
\$175/start
Elaine Yaker has a simple perceptive style.

Purple Frog Photography

Wyandotte studio or on location • 734-720-0119
purplefrogphotography.com
\$100/studio, \$150/on location
Alicia Ryan offers a relaxed style and comedic attitude.

Shasta Marie Photography

Based in Ann Arbor, on location 734-274-9005
shastamari photography.com.
\$200/family, maternity, newborn, child start
Sessions for families, newborns and mummies-to-be.

Theresa Gallaher Photography

Oxford studio or on location 248-770-6846
tgallaherphotography.com
\$75/on-location start (\$50/deposit), \$15/multiple location fee
Gallaher strives to make her clients feel at ease.

Tracy Grosshans Photography

Ypsilanti studio and farm 734-776-5506
tracygrosshans.com
\$200/newborn start, \$150/kid
Indoor studio and unique outdoor farm option.

Baby Stores

Congratulations: You're pregnant! Now it's time to stock up on all that stuff, stuff, stuff. Whether you're looking for some gear to satisfy your nesting cravings or infant essentials, Macomb, Oakland, Wayne and Washtenaw counties are packed with one-stop-shops, baby-exclusive retailers and resale stores where you'll find great bargains for baby. *Note: Some hours may change seasonally; check ahead for the latest.*

BABY RETAILERS

Bec and Sam's

146 W. Maple Road,
Birmingham • 248-593-8650
becandsams.com
10 a.m.-5 p.m. Monday-Friday,
11 a.m.-5 p.m. Saturday,
noon-4 p.m. Sunday
Special occasion clothing (new-born-16 girls, up to size 4 boys),
bedding, baby clothes and more.

beeXpression

Based in Troy; online store
248-431-5455
beexpression.com
E-store with organic cotton
onesies, bib, and hats for babies/
tykes; choices for older kids, too.

Connie's Children's Shop

23240 Greater Mack Ave., St.
Clair Shores • 586-777-8020
shopconnies.com
9:30 a.m.-6 p.m. Monday-Friday,
9:30 a.m.-5 p.m. Saturday
Special event attire and formal
wear for preemies, newborns,
toddlers and kids.

Egg by Susan Lazar

244 E. Maple Road,
Birmingham • 248-645-0400
egg-baby.com
10 a.m.-6 p.m. Monday-Saturday,
11 a.m.-5 p.m. Sunday
Modern/designer apparel for ba-
bies and toddlers up to 8 years.

Elephant Ears

436 S. Main St., Plymouth
734-622-9580

elephantearsonline.com
10 a.m.-7 p.m. Monday-Saturday,
11 a.m.-6 p.m. Sunday
Strollers, high chairs, baby clothes,
breast-feeding items, more.

James & Olive

431 S. Main St., Rochester
248-650-0700
fb.com/jamesandolive
10 a.m.-6 p.m. Monday-Saturday
High-end boutique-style clothing
and baby equipment.

Lil' Goods

15 E. Kirby St., Suite 108, Detroit
313-703-7754 • goodsdetroit.com
Noon-6 p.m. Tuesday-Friday,
11:30 a.m.-7 p.m. Saturday,
11 a.m.-4 p.m. Sunday
Midtown shop with Detroit- and
Michigan-themed tees, onesies
and more for tykes.

Lil' Rascals

580 N. Old Woodward Ave.,
Birmingham • 248-731-7701
lilrascalsbham.com
10 a.m.-6 p.m. Monday-Saturday
year-round; plus 9 a.m.-3 p.m.
Sunday May-October
Clothes, toys and accessories for
kids; personalized items.

Max & Izzy's Children Boutique & Bookstore

345 N. Main St., Milford
248-714-6421
fb.com/maxizzyschildrensbou-
tiquebookstore
11 a.m.-4 p.m. Monday, 10 a.m.-
5:30 p.m. Tuesday-Wednesday,
10:30 a.m.-6:30 p.m. Thursday,

10:30 a.m.-5 p.m. Friday, 10 a.m.-
5 p.m. Saturday, noon-4 p.m.
Sunday (change in fall, winter)
Clothing for infants, boys and
girls from brands like Paige Lauren
Baby and Giggle Moon.

Modern Natural Baby

200 W. Nine Mile Road, Suite B,
Ferndale • 248-629-6306
modernnaturalbaby.com
10 a.m.-6 p.m. Monday-Saturday,
noon-5 p.m. Sunday
Organic clothing, toys, books,
cloth diapers and more. Gift certif-
icates, registry available.

Mom and Baby Shop

43000 W. Nine Mile Road, Suite
303, Novi • 313-444-2229
momandbabystore.com
10 a.m.-3 p.m. Monday-Friday, 10
a.m.-5 p.m. Saturday
Breast-feeding products, cloth
diapers, carriers/wraps, nursery
bedding, more; classes too.

My Urban Toddler

Ann Arbor: 3010 Washtenaw
Ave., Suite 107, 734-585-0788,
10 a.m.-8 p.m. Monday-Saturday,
noon-6 p.m. Sunday
Saline: 7025 E. Michigan Ave.,
734-944-3628, 9 a.m.-5 p.m.
Monday-Saturday
myurbantoddler.com
Maternity and kids' apparel (pree-
mie-8 years), car seats, carriers,
toys. Gift registry.

The Little Seedling

2121 W. Stadium Blvd.,
Ann Arbor • 734-418-2392

thelittleseedling.com
9 a.m.-7 p.m. Monday-Friday, 9
a.m.-6 p.m. Saturday, 11 a.m.-6
p.m. Sunday
Register for your shower or stop
by to find bouncers, cloth diapers,
clothing and safety gear.

Wild Child Kids Boutique

8410 Macomb St., Grosse Ile
734-692-1457
fb.com/wildchildkidsboutique
10 a.m.-6 p.m. Monday-Friday,
10 a.m.-3 p.m. Saturday
Infant and toddler clothing from
preemie sizes 0 months to 6X;
toys, baptism gowns.

BABY RESALE SHOPS

9 Month Bump

2671 W. Jefferson Ave.,
Trenton • 734-307-7491
9monthbump.com
11 a.m.-6 p.m. Tuesday-Friday,
10 a.m.-4 p.m. Saturday
Gently used, stylish, affordable
maternity clothes, nursing acces-
sories and baby gifts.

Another Child Children's and Maternity Quality Resale

31360 Harper Ave., St. Clair
Shores • 586-872-2315
fb.com/anotherchildscs
10 a.m.-6 p.m. Monday-Wednes-
day and Friday-Saturday, 10
a.m.-7 p.m. Thursday, 11 a.m.-4
p.m. Sunday
Discount designer kids and mater-
nity clothing, more.

**Baby Baby**

153 E. Main St., Northville
248-347-2229
babybabymi.com
March 15-Dec. 15: 10 a.m.-7 p.m.
Monday-Saturday, noon-5 p.m.
Sunday (closes 6 p.m. Monday-Saturday in winter)
Gently used stock for newborns and moms-to-be.

Children's Orchard

44915 Hayes Road, Sterling Heights • 586-532-8280
childrensorchar.com
10 a.m.-6 p.m. Monday-Wednesday and Friday, 10 a.m.-8 p.m. Thursday, 10 a.m.-5 p.m. Saturday, noon-4 p.m. Sunday
Designer kids clothes (0-18/20), plus toys and more.

Grow With Me Resale Shop

2521 Jackson Ave., Ann Arbor
734-622-0224
growwithme123.com
9:30 a.m.-8 p.m. Monday-Friday, 9:30 a.m.-7 p.m. Saturday, 11 a.m.-5 p.m. Sunday
New/used clothes (newborn-16 girls, newborn-18 boys) toys, accessories, more.

Kids Go Round

37128 Dequindre Road, Sterling Heights • 586-979-0232
kgrauctions.com
10 a.m.-6 p.m. Monday-Thursday, 10 a.m.-7 p.m. Friday, 10 a.m.-5 p.m. Saturday, noon-4 p.m. Sunday
Gently used infant clothing plus attire for kids, juniors.

Little Rascals Resale & Boutique

16048 15 Mile Road, Fraser
586-294-7300
lilrascalsresaleboutique.com
10 a.m.-5 p.m. Monday-Wednesday and Friday, 11 a.m.-7 p.m. Thursday, 10 a.m.-3 p.m. Saturday
Buys/sells maternity and children's clothing (newborn-16), books, toys, shoes, furniture.

Lollipop Kids Children's Resale

50432 Schoenherr Road, Shelby Township
586-532-8585
lollipopkidsresale.com
Summer: 10 a.m.-6 p.m. Monday-Saturday; winter: 10 a.m.-6 p.m. Monday-Saturday
Gently used infant clothes through size 6, high chairs and toys.

Mommies Must Haves

22882 Orchard Lake Road, Farmington • 248-282-9187
mommiesmusthaves.com
11 a.m.-6 p.m. Monday-Friday, 11 a.m.-4 p.m. Saturday, by appointment Sunday
High-quality maternity, toddler and infant clothes.

Morgan's Boutique Resale and Consignment Clothing

119 S. Saginaw St., Holly
810-373-2196
fb.com/morgansboutiqueholly
10 a.m.-6 p.m. Monday-Saturday
Resale and custom items, plus handmade doll clothes.

Once Upon a Child

Ann Arbor, Canton, Novi, Southfield, Troy
onceuponachild.com
This resale franchise buys/sells gently used clothing (up to youth size 20), more.

Restyle Child

2123 Cole St., Birmingham
248-792-9347
restylechild.com
10 a.m.-5 p.m. Monday-Saturday; consignment by appointment
Has a toy-filled play area plus trendy new/resale clothing.

Second Glance Resale Shop

Eastpointe: 18859 E. Nine Mile Road, 586-498-5151
Grosse Pointe Woods: 20467 Mack Ave., 313-372-5151
St. Clair Shores: 31252 Harper Ave., 586-294-5151
Times vary by location
secondglanceresale.com
Gently used kids clothing, baby equipment, more.

Slightly Pregnant Maternity Resale

32172 Woodward Ave., Royal Oak • 248-549-2229
facebook.com/slightlypregnant
10 a.m.-6 p.m. Tuesday-Friday, 10 a.m.-4 p.m. Saturday

Takes consignments daily; sells gently used clothing, nursing tops, bras and swimsuits.

Sweet Peas Baby Boutique

23053 Michigan Ave., Dearborn • 313-359-2996
sweetpeasbabyboutique.com
10 a.m.-9 p.m. Monday-Saturday, noon-6 p.m. Sunday
Clothing bought/sold is sized infant to age 12. Plus games, toys, furniture equipment.

The Funky Frog Children's Resale Boutique

433 S. Main St., Rochester
248-656-1937
thefunkyfrogonline.com
10 a.m.-6 p.m. Monday-Friday, 10 a.m.-4 p.m. Saturday
Gently used name-brand clothing, shoes, hats, movies, more; inventory changes daily.

The Green Room Boutique and Cutie Patootie Children's Consignment

21984 23 Mile Road, Macomb Township • 586-329-3450
thegreenroomresale.com
10 a.m.-6 p.m. Monday-Wednesday and Friday, 10 a.m.-7 p.m. Thursday, 10 a.m.-5 p.m. Saturday
Clothing/shoes for kids in sizes 0-16, juniors and women; more.

Play Groups

Life with a baby or toddler is full of so much joy – and *lots* of baby talk. But one thing often missing for new moms and dads is some adult interaction. Play dates with groups or at local baby-friendly venues can be a breath of fresh air between sleepless nights and frazzled days, and they offer a chance to meet like-minded parents and for little ones to form their earliest friendships. Check out these great clubs, groups and play places in the area.

CLUBS AND GROUPS

Offer play groups among membership perks. Some have free trials; be sure to ask.

Center for the Childbearing Year
722 Brooks St., Ann Arbor
734-663-1523
center4cby.com

Free, ongoing parent-toddler drop-in play group 10 a.m.-noon Wednesdays. Moms, dads, partners, babies, toddlers welcome. May meet at park in warm weather.

Cutie-Patooties! Rochester Area Mom & Tots Playgroup
Auburn Hills, Lake Orion, Oakland Township, Oxford, Rochester, Shelby Township, Troy, nearby
meetup.com/cutie-patooties-rochester-area-mom-tots-play-group
Hosts one to two play dates a month for infants to kindergartners, plus seasonal outings.
\$12/year.

Farmington Area Mothers' Club
Farmington, Farmington Hills, surrounding areas
famcmi.org
Three to five events per week for infants, toddlers, preschoolers, elementary kids and moms.

\$30/year; also complete three easy volunteer credits.

First Steps Washtenaw
Various locations, Washtenaw County
washtenawsuccessby6.org/parents/first-steps

Parent/child play groups for infants, toddlers and preschoolers with a parent or adult. Sliding scale cost. Times/days vary based on school district.

Greater Oakland Mothers of Multiples (goMOMS)
Oakland County area
Lutheran Church of Abiding Presence, 1550 Walton Blvd., Rochester Hills
gomoms.org
This group for mothers of twins, triplets or more has informal play dates. Meets 7 p.m. second Tuesdays September-June. Not religiously affiliated.

Huron Valley Moms' Club
Commerce, Highland, Milford, White Lake
meetup.com/huron-valley-moms-club
Daytime activities for moms and kids, including weekly play groups. Dues are \$35/year.

Huron Valley Parents of Multiples
Ann Arbor, surrounding areas
hypom.org
Parents of twins and multiples can join. Has 100-plus members; offers play dates, family events, more. \$30/year.

'It Takes A Village' Parenting Group
318 W. Nine Mile Road, Ferndale
248-955-3219
naturesplayhouse.com
Parents share experiences in a friendly environment while kids play. 11:30 a.m. second Fridays. No registration necessary. Free.

Lamazee Family Center
2855 Boardwalk Drive, Ann Arbor
734-973-1014
lamazefamilycenter.org
Baby Fun Time is for moms and other caregivers of kids 5 months-plus. Weekly topic, circle time, games, more. \$68/six-week session.

Macomb County Mothers of Multiples
Macomb County, surrounding communities
Holy Cross Lutheran Church, 30003 Ryan Road, Warren
mcmominfo@yahoo.com

bigtent.com/groups/mcmom
Parents of twins-plus welcome. Play groups meet yearlong. Meets 7:30 p.m. third Thursdays (except April, July, December). \$25/year.

Macomb Moms Meetup
Macomb, Oakland and Wayne counties
meetup.com/macombmoms
Most kids are under 4. Lots of activities, play dates. Locations chosen by members. \$10/year.

Mindful Moms
Briarwood Center for Women, Children and Young Adults
400 E. Eisenhower Parkway, Building 2, Suite B, Ann Arbor
734-232-2600
Moms meet and get tips on topics like swaddling and baby soothing. 4:30-5:30 p.m. Wednesdays. Babies welcome. Free, open to the public, drop-ins welcome.

MOMS Club (Moms Offering Moms Support)
Designed for at-home moms, this international group has many local spots. Play groups are for members; host homes rotate. Chapters also do service projects to help kids. Learn more at momsclub.org.

Play Groups

and check these out:

- **Canton, Livonia, Plymouth, Westland**
facebook.com (search MOMS Club Livonia/Plymouth/Westland/Canton)
Play groups meet weekly. All ages. Contact for rates.
- **Chesterfield, New Baltimore**
anchorbaymomsclub.org
Age-appropriate activities, infants-school age. Field trips, play dates, public service events, mom nights out (dad too). \$25/year.
- **Clinton, Macomb, Washington townships**
momsclubofclintonmacomb.yolasite.com
Hosts park play days, age-appropriate play groups, lunch dates and more. Contact for more.
- **Commerce, Walled Lake Area (plus Wolverine Lake Village)**
momsclubcwl.net
Age-appropriate play groups offered for all children, plus park dates, special events, holiday parties, family outings and more. \$24/year.
- **Dearborn**
momsclubdearborn.org
Weekly kid-friendly activities include park play dates, group outings, moms nights out. At-home, part-time, working moms. \$20/year.
- **Lake Orion, Orion Township**
lakeorionsouth@hotmail.com
Weekly daytime play groups at members' homes, moms night out, outings to the zoo/

local parks/libraries, more. \$20/year.

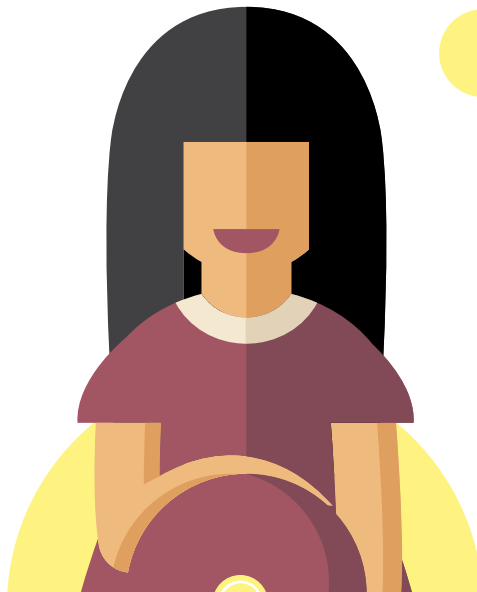
- **Northville**
momsclubofnorthville.org
Kids ages 0-5 welcome. Play groups meet Wednesday mornings, plus other activities. \$25/year.
- **Novi**
momsclubofnovi.com
Daytime play groups plus outings to parks, zoo, more; moms nights out, too. Moms of infants-plus welcome. \$20/year.
- **Ortonville, Goodrich**
ortonvillemomsclub.webs.com
Monthly meetings (Wednesdays), park play days, play groups and more for moms in 48462 and 48438 ZIP codes. \$20/year.
- **Royal Oak**
North of 12 Mile Road: Claw-

son, Royal Oak
South of 12 Mile Road:
Ferndale, Pleasant Ridge,
Royal Oak
www.momsclubro.com
Planned daily activities for ages 0-6. Play dates at parks, the zoo, member homes and more. \$25/year.

- **Shelby Township, Sterling Heights, Utica**
586-819-7353
meetup.com/momsclubsus
Kid-friendly meetings are second Thursdays; age-split play groups meet at least once a month (0-6 years). Weekly; kid-friendly cooking, walking, coffee club. \$20/year.
- **South Lyon**
sites.google.com/site/momsclubofsouthlyon
Members live in South Lyon and New Hudson south of

I-96. Fun activities almost every day, play groups, walking club, book club, holiday parties and more. \$25/year.

- **Warren**
sites.google.com/site/momsclubofwarrenmichigan/
Open to Center Line, Eastpointe, Fraser, Roseville, St. Clair Shores and Warren at-home moms. Offers play groups and fun activities. \$20/year.
- **Waterford – North**
momsclubwaterfordnorth.org
Members live north of M-59. Weekly age-specific groups for birth-5. \$20/year.
- **Waterford – South**
momsclubwaterfordsouth.webs.com
Open to families south of M-59. Multiple weekly play groups, crafts, recipe club, outings, more. \$20/year.
- **Wixom, Commerce, Milford, New Hudson (north of I-96), Walled Lake, Wolverine Lake Village**
sites.google.com/site/momsclubwixom
Fun events almost daily, including age-divided play groups. \$20/year.
- **Ypsilanti, Ann Arbor, Belleville, Milan, Saline, Superior Township, Willis**
734-707-8MOMsites.google.com/site/momsclubofypsilanti
Monthly social meetings, backyard/park play dates, more. \$20/year.



Moms of Faith

Meets at Christ Our Savior Lutheran Church
14175 Farmington Road, Livonia
734-658-2463
christoursavior.org
Group of moms with preschool-age kids. Meets 9:30-11:30 a.m. second Tuesdays September-May. Play dates, mom nights too. \$30/year, includes child care.

MOPS International (Mothers of Preschoolers)

Got kids from birth to kindergarten? Belong to a faith community? Check if your church has a MOPS. Moms meet while kids play and socialize nearby with child care; added activities often available. They're Christian-based, but all faiths typically welcome. National dues are \$24.95 (totals vary by group). Here are a few (more at mops.org):

- **Birmingham, Our Shepherd Lutheran**
2225 E. 14 Mile Road
248-646-6100 • oursshepherd.net
Meets 9:30-11:30 a.m. first and third Wednesdays, September-May. Plus moms nights out, play groups, play dates. Call for rates.
- **Clinton Township, Trinity Lutheran**
38900 Harper Ave.
586-463-2921
trinityct.org/mops
Clinton Township and surrounding Macomb County cities

Meets 9-11 a.m. first and third Wednesdays during school year at church; summer Wednesdays at local parks. Structured playtime for kids. \$15/registration.

- **Livonia, Bell Creek Community Church**
30000 Five Mile Road, Livonia
734-367-4632
bellcreek.org/mops
Meets 9:30-11:15 a.m. first and third Thursdays, September-May (summer play dates at local parks). \$75/year; can break into semesters, scholarships available.
- **Northville, Ward Evangelical Presbyterian Church**
40000 Six Mile Road
248-374-7400
wardchurch.org/mops
Meets 9:30-11:30 a.m. first and third Thursdays, September-May. Register. Local fee \$25/semester (September-December, January-May), \$40-\$50/child care, semester. Kids grouped by age.
- **Novi, Oak Pointe Church**
50200 W. 10 Mile Road
248-912-0043 • oakpointe.org
Meets 7:15-9:15 p.m. first and third Mondays in fall; second and fourth Mondays in spring. September-May. \$7/meeting child care. Play dates monthly. Open to pregnant moms-kindergarten. \$50/year.
- **Plymouth, NorthRidge Church**
49555 N. Territorial Road
734-414-7777

northridgechurch.com/mops
Meets 9:15-11:30 a.m. first and third Thursdays, September-May. Evening group available. Call for rates.

- **Sterling Heights, Lakeside Bible Chapel**
39939 Hayes Road
586-247-5226
lbchapel.org/women/mops
Meets 9:15-11:30 a.m. second and fourth Tuesdays, September-May. \$24.95/year plus \$5/meeting fee to defer costs.
- **Troy, Kensington Church**
1825 E. Square Lake Road
248-786-0600
kensingtonchurch.org
Meets 9-11:30 a.m. Tuesdays, September-May. Fees/supplies, child care.

Mothers & More

mothersandmore.org
This national grassroots org creates a community for moms and kids, including play groups. Dues start at \$45. It has several local branches:

- **Clarkston Area (Chapter #305)**
Clarkston, and surrounding cities
clarkstonareamothersandmore.com
Meets 8 p.m. first Mondays at Lakes Grille in Clarkston. Newborns-age 4 welcome. Local play groups.
- **Oakland County (Chapter #13)**

Farmington, Lake Orion, Oakland Township, Rochester, Rochester Hills, Royal Oak, Shelby Township, Sterling Heights, Troy
fb.com/mothersandmore13
Weekly play groups, plus field trips, book clubs, moms night out/in, more.

- **Oakland County Lakes Area (Chapter #135)**
248-360-7702
groupspaces.com/MMOCLA
Commerce, Highland, Milford, Walled Lake, Waterford, West Bloomfield, White Like, Wixom, Wolverine Lake
Moms night out, play dates, more. Open to moms of kids of all ages.

Mothers of Multiples of South Lyon

South Lyon, the surrounding area
gregmelissaw@ameritech.net
Meets 7 p.m. second Thursdays at Witch's Hat Depot in South Lyon. Plus play dates, mom-to-mom sales, more. Moms of twin/multiples. \$10/year.

No Nuts Moms Group

All Michigan
nonutsmomsgroup.weebly.com
Its 50-plus peanut/tree-nut free groups serve kids of all ages with life-threatening food allergies. Support and play groups at venues, parks. Free.

Perfect Playmates Playgroup

Northville, Plymouth, Westland,

nearby areas
meetup.com/perfect-playmates
Parents with tots who meet in
spring and summer; play dates to
parks, play areas, libraries, more.
\$5/family per year.

The Birmingham/Beverly Hills/ Troy Playgroup Meetup

Southern Oakland County
meetup.com/thebttplaygroup-
meetup

Moms/female caregivers of young
kids have fun at local destinations.
Any member can organize/host.
\$11.36/year.

The Plymouth Area Playgroup Meetup

Plymouth, surrounding areas
meetup.com/plymouthplaygroup
Open to moms and dads of kids
newborn-age 6. Meets multiple
times each week at indoor, out-
door locations. \$12/year.

The Real Housewives of the Brighton Area

Brighton and surrounding area
meetup.com/real-housewives-of-
the-brighton-area/
Open to at-home, working moms.
Play dates, occasional nights out.
\$13.52/year.

Working Moms of Canton/ Livonia/Novi

Ann Arbor, Canton, Farmington
Hills, Livonia, Novi, Westland
meetup.com/workingmoms-
cantonlivonianovi
Play dates, library events, more.
Meets weekends, weeknights to

be accessible to (but not limited
to) working parents. Kids mostly 3
months-4 years. \$10/year.

PLAY VENUES

*These fun spots are popular for
play groups. Bring yours (call
ahead to schedule; discounts may
apply!) – or drop-in to socialize
sans commitment.*

Boogie Babies

1928 Star-Batt Drive, Suite B,
Rochester Hills
248-852-6288
boogiebabies.net
One-stop sibling fun for in-
fants-age 14, from play structures
to disco dancing to doll house
tea parties and a café. Open play
Tuesdays-Sundays. Baby zone,
live music, music classes, puppet/
magic shows, more. Free/parents
and 0-6 months, \$3/7-11 months,
\$5/12-23 months, \$7/2-14 years.

Bouncing Off the Walls

3887 Fort St., Wyandotte
734-246-9977
bouncejumparty.com
Tykes can join open bounce once
they start walking. 10 a.m.-1 p.m.
and 6-8 p.m. Tuesday and Thurs-
day, 3:30-5:30 p.m. Wednesday
and Friday, 10 a.m.-1:30 p.m. Sat-
urday, 11 a.m.-1:30 p.m. Sunday.
\$6/kid, free/adults.

Canton Leisure Services

Summit on the Park
46000 Summit Parkway, Canton

734-394-5460 • cantonfun.org
Kids ages 0-5 and parents get
drop-in play (10-11:30 a.m.) and
swim (10-12:30 p.m.) on Tues-
days Oct. 13, 2015-May 10, 2016
(check ahead, closed select dates).
\$4/city residents, \$5/nonresidents.

Detroit Kid City

Clinton Township: 37051
Gratiot Ave.
Southfield: 29115 Greenfield Road
248-443-5300
detroitkidcity.com
Features a hands-on “Mini De-
troit” play city for infants to age
10. 9 a.m.-3 p.m. Mondays-Satur-
days. Free/infants 12 months and
under, parents, \$10/other kids.

Ferndale Recreation – Kids Corner

Gerry Kulick Community Center,
1201 Livernois Ave., Ferndale
248-544-6767
ferndalemi.gov
Find toys, mats and a bounce
house for 9 months-5 years.
10 a.m.-3 p.m. Monday-Fri-
day, 9 a.m.-noon Saturday. \$4/
visit/child, \$10/five-visit pass,
\$20/10-visits.

Funtastic Play Center

Canton: 43337 Joy Road,
734-33-7402
Woodhaven: 20372 Van Horn
Road, 734-692-3867
funtasticplaycenters.com
Babies can play on plush mats,
and tykes on modular soft play
equipment. Open play for ages
0-8 is 9 a.m.-8 p.m. Monday-Fri-

day; toddler play time for 2
and under 9-11 a.m. Wednes-
day-Thursday. Free/infants, \$4/
crawlers, \$8/walkers.

Goldfish Swim School

Ann Arbor: 2107 W. Stadium
Blvd., 734-864-5555
Birmingham: 2388 Cole St., Suite
101, 248-644-1914
Canton: 225 Sheldon Road,
248-596-1914
Clarkston: 6340 Waldron Center
Drive, 248-795-2252
Farmington Hills: 22710 Haggerty
Road, Suite 200, 248-596-1914
Macomb Township: 18377 Hall
Road, Suite 1, 248-596-1914
Rochester: 550 South St.,
248-596-1914
goldfishswimschool.com
Besides its swim lessons starting at
4 months, these venues can host
your play dates.

Jungle Java

Ann Arbor: 3900 Jackson Road,
734-926-2990
Canton: 6481 Canton Center
Road, 734-927-6680
Clinton Township: 44595 Enter-
prise Drive, 586-203-0500
Farmington Hills: 27658 Middle-
belt Road, 248-919-3284
junglejavaplay.com
These jungle-themed play struc-
tures include toddler areas for kids
under 3. Free/adults, under 12
months, \$4/12-23 months, \$8/
ages 2-plus. (Clinton Township:
\$9/2-plus). Open daily; times vary
slightly by location.

Play Groups

Livonia Recreation Center – Tree Fort, Gymnastics

15100 Hubbard St., Livonia
734-466-2410 • ci.livonia.mi.us
Its indoor tree fort for ages 2-12 has toddler-friendly fun (8 a.m.-7:30 p.m. Monday-Friday, 8 a.m.-6 p.m. Saturday, 8 a.m.-5 p.m. Sunday; free/3 and under, day pass fees/vary). Toddlers who can walk can try drop-in gymnastics (times vary, Monday-Thursday, September-May, \$5/child) with parent.

Mega Fun and Fitness

22475 Heslip Drive, Novi
248-344-9344
mega-gym.com
Find a gym, trampoline, obstacle courses, a foam pit, balance beams and more. Toddling kids up to age 5 can enjoy Preschool Playtime 10-10:50 a.m. Thursdays for \$5 during the school year (September-June).

My Urban Toddler

7025 E. Michigan Ave., Saline
734-944-3628
myurbantoddler.com
Kids ages 0-5 get a play kitchen, theater, firehouse and more. Open play is 9 a.m.-3 p.m. Monday-Friday. Free/0-6 months; older: \$10/first child, \$7.50/additional.

Nature's Playhouse

318 W. Nine Mile Road, Ferndale
248-955-3219
naturesplayhouse.com
An indoor play center and wellness enrichment center for families with small children. Drop-in play (fees) and free family support Monday-Saturday.

Paradise Park

45799 Grand River Ave., Novi
248-735-1050
paradiseparknovi.com
Tykes 2-plus can try out trampoline and mini golf in summer (plus go-karts and climbing wall for 3-plus). In the winter there's a bounce house, miniature bowling, laser tag. Hours, costs vary by season, attraction.

Play Away

Hunter Community Center, 509 Fisher Court, Clawson
248-790-6547
playawayonline.com
Open play for infants-3 years. Includes a small art activity. Check for times, days. \$6/one child, \$10/two related kids (may vary). Private groups by appointment.

Pump It Up

Auburn Hills: 1720 Opdyke Court,
248-375-1100

Canton: 46090 Michigan Ave.,
734-495-1222
Shelby Township: 15117
Commercial Drive, 586-416-4386
Taylor: 25710 Northline Road,
734-946-2017
Wixom: 28373 Beck Road, Unit H,
248-912-1090
Kids under 34 inches can try inflatables with parent. Pop-in times vary by location; check ahead for pre-K specific options. \$7-\$8/child.

Rochester Play!

380 E. Second St.
248-650-7529
rochesterplay.com
This indoor play center and café is for ages 1-plus and preschoolers, with active gaming fun and a laser maze for siblings ages 6-12. Open play 9 a.m.-8 p.m. Monday-Saturday, noon-6 p.m. Sunday \$6.50/ages 1-3; \$8/ages 4+.

Roseville Parks and Recreation

18185 Sycamore St., Roseville
586-445-5480
roseville-mi.com

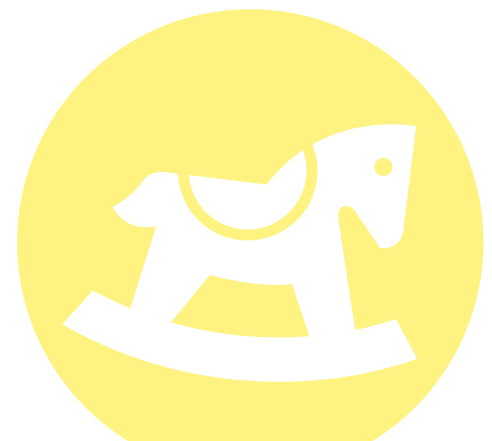
Drop-in play includes Little Tikes toys, slides, small basketball hoops, scooters and more. Parents must attend with child. 10 a.m.-noon Tuesdays, Thursdays Sept. 29-Dec. 17, 2015 (except Nov. 26); returns in winter 2016. \$2/child.

The Chelsea TreeHouse

1101 S. Main St., Chelsea
734-475-1555
thechelseatreehouse.com
This indoor playground has an enclosed area for baby and toddlers. Full menu. Usually daily; hours vary. Free/0-12 months or age 16-plus, \$7/1-15 years.

Tiny Town Play Lounge

15444 Haggerty Road, Northville
734-667-4965
tinytownplaylounge.com
Crawlers to age 6 can play house, supermarket, vet and more. 9:30 a.m.-5:30 p.m. Monday-Friday. 9:30-closing time varies Saturday. Free/0-6 months, \$4.50/7-11 months, \$7.50/1 year-plus.



Child Care

Whether you just welcomed a new bundle of joy or have energetic toddlers, southeast Michigan has a caregiver sure to fit your family's needs. Child care ranges from in-home options to drop-off care at state-of-the-art facilities – or even a caregiver to come to your vacation destination. Metro Detroit offers many child care choices, from au pairs to child care centers. Check out our compilation to see what is best for your family.

AU PAIRS

AuPairCare

Serves greater Detroit area
800-428-7247
aupaircare.com
Offers full-time live-in child care personnel from around the world. Allows extensions on services. Has an infant-specialized program. Total annual cost estimated \$18,013. Hours arranged up to 45 hours/week.

Au Pair in America

Serves Ann Arbor, Dearborn Heights, Farmington Hills, Rochester Hills
800-928-7247
aupairinamerica.com
More than 25 years experience. Provides live-in child care. Its au pairs come from various countries. Average \$365/week. Hours arranged up to 45 hours/week.

Go Au Pair

Serves metro Detroit
888-AUPAIR-1
goaupair.com/detroit
Find a live-in au pair from one of more than 60 countries that fits your family's schedule/needs. Average \$353.35/week; hours up to 45 hours/week.

CHILD CARE CENTERS

Annie's Children's Center

- Downtown Ann Arbor: 216 Beakes St., 734-761-8070
- East Ann Arbor: 3220 Oakwood St., 734-973-7222
- West Ann Arbor: 5350 Park Road, 734-663-8081

(6 weeks-12 years)
Main center: 734-663-8081
anniescc.com
Caring for kids since 1995. Uses the Child Care Daily App to update parents in real time about child's daily activities. \$1,175/month infants, toddlers, \$960/month preschool age. 6 weeks-10 years (unless noted). 7 a.m.-6 p.m. Monday-Friday.

Berkley Building Blocks

Tyndall Center: 14501 Talbot St.
Avery Center: 14700 W. Lincoln Oak Park
248-837-8900
berkleyschools.org/buildingblocks
6 weeks-5 years
A quality developmental program for infants, toddlers and preschoolers. 7 a.m.-6 p.m. Monday-Friday. GSRP, Head Start, tuition programs available.

Bright Horizons

Note: All centers open Monday-Friday. Some located in other facilities.

- Detroit (3): 1110 Seward Ave., 313-871-2100; 2211 Woodward Ave., 313-471-6454; 13440 Outer Drive West, 313-592-5437 (7 a.m.-6 p.m.)
- Farmington Hills: 31440 Northwestern Highway, Suite 180, 248-538-5374 (7 a.m.-6 p.m.)
- Livonia: 38945 Ann Arbor Road, Livonia, 734-464-2789 (7 a.m.-6 p.m.)
- Pontiac: 161 Bassett St., 248-858-6667 (6:30 a.m.-6:30 p.m.)
- Rochester: 871 Oakwood Drive, 248-652-1725 (6:30 a.m.-6:30 p.m.)
- Rochester Hills: 1263 S. Adams Road, 248-375-1700 (7 a.m.-6 p.m.)
- Troy: 3950 Livernois Road, 248-689-9565 (7 a.m.-6 p.m.)
- West Bloomfield: 2965 Walnut Lake Road, 248-626-6665 (7 a.m.-6 p.m. Monday-Thursday, 7:30 a.m.-6 p.m. Friday)

brighthorizons.com

Offers "Worlds at Their Fingertips

Curriculum." Parents can visit and participate. Rates available upon visit. 6 weeks to pre-K. NAEYC accredited.

Childtime Learning Centers

Note: All centers open Monday-Friday.

- Ann Arbor: 4220 Plymouth Road, 734-332-0062 (6:30 a.m.-6 p.m., 6 weeks-6 years)
- Canton (2): 3101 N. Lilley Road, 734-981-3222 (6 a.m.-6:30 p.m., birth-12 years); 49810 Cherry Hill Road, 734-495-1500 (6:30 a.m.-6:30 p.m. Monday-Tuesday and Thursday-Friday, 6:30 a.m.-8 p.m. Wednesday, 6 weeks-12 years)
- Chesterfield Township: 31480 23 Mile Road, 586-598-1700 (6 a.m.-6:30 p.m., 6 weeks-12 years)
- Commerce: 5230 Bogie Lake Road, 248-366-2507 (6:30 a.m.-6:30 p.m., 6 weeks-12 years)
- Dearborn: 6051 Mercury Drive, 313-240-7529 (6:30 a.m.-6 p.m., 6 weeks-12 years)

- Detroit (2): 500 Renaissance Center, 313-393-8940 (6:30 a.m.-6:15 p.m., 6 weeks-12 years); 3031 W. Grand Blvd., Suite 100, 313-874-3300 (6:30 a.m.-6:30 p.m., 6 weeks-10 years)
- Farmington Hills: 36730 12 Mile Road, 248-489-8555 (6:30 a.m.-6:30 p.m., 6 weeks-12 years)
- Grosse Pointe Woods: 19251 Mack Ave., 313-886-6565 (6:30 a.m.-6:30 p.m., 6 weeks-12 years)
- Lathrup Village: 27900 Evergreen Road, 248-569-6789 (6:30 a.m.-6 p.m., 6 weeks-12 years)
- Macomb Township: 16500 24 Mile Road, 586-677-9118 (5:30 a.m.-6:15 p.m., 6 weeks-13 years)
- Northville: 20804 Halsted Road, 248-476-1516 (6:15 a.m.-6:15 p.m., 6 weeks-12 years)
- Plymouth Township (2): 45678 Helm St., 734-455-5490 (6:30 a.m.-6:30 p.m., 6 weeks-12 years); 47300 Port St., 734-455-2761 (6:30 a.m.-6 p.m., 6 weeks-12 years)
- Shelby Township (2): 5959 24 Mile Road, 586-781-8680 (6 a.m.-6:30 p.m., 6 weeks-12 years); 49143 Hayes Road, 586-532-7529 (6:30 a.m.-6:30 p.m., 6 weeks-12 years)
- Southfield: 15636 JL Hudson Drive, 248-905-5300 (6:30 a.m.-6:30 p.m., 6 weeks-10 years)

- Troy (2): 150 E. Long Lake Road, 248-528-1780 (6:30 a.m.-6 p.m., 6 weeks-10 years); 4533 Crooks Road, 248-952-1920 (6:30 a.m.-6:30 p.m., 6 weeks-10 years)
- Westland (2): 34203 Ford Road, 734-729-3434 (6 a.m.-6 p.m., 6 weeks-12 years); 32503 Ann Arbor Trail, 734-425-7670 (6:30 a.m.-6:30 p.m., 6 weeks-12 years)

childtime.com

Reggio Emilia philosophy of learning. Programs are tailored to fit kids' needs. Teachers and centers provide clean, safe and home-like spaces. Exploring, discovery encouraged. Call for pricing.

Island Kiddie Kampus

- Grosse Ile Township: 8200 Grays Drive, 734-671-1100
 - Riverview: 14525 Sibley Road, 734-479-4191
 - Southgate: 12250 Fort St., 734-281-8555
 - Taylor: 15740 Racho Road, 734-374-8222, ext. 202
- islandkiddiekampus.com
Diverse culture. Kids learn and try new and exciting things. Rates vary by age. 6 weeks-12 years. 6:30 a.m.-6 p.m. Monday-Friday.

IXL Learning Center

- Birmingham: 1803 E. 14 Mile Road, 248-988-8448 (6 weeks-6 years)
- Hamburg: 10088 Professional Center Drive, 810-231-9955
- Howell: 5424 E. Grand River Ave., 517-546-2000

- Northville: 43333 Seven Mile Road, 248-349-2223
- South Lyon: 12556 10 Mile Road, 248-437-6600

ixlkids.com

Children learn through experience with stimulating programs, creativity building, independence and more. Rates vary. 6 weeks-grade 6, age 12/summer camp (unless noted). 7 a.m.-6 p.m. Monday-Friday.

KinderCare

Note: All centers open Monday-Friday.

- Ann Arbor: 2300 S. Huron Parkway, 734-971-6626 (6:30 a.m.-6 p.m.)
- Canton: 44212 Cherry Hill Road, 734-981-4774 (6:30 a.m.-6:30 p.m.)
- Dearborn: 4900 Evergreen Road, 313-441-1462 (6:30 a.m.-6:30 p.m.)
- Farmington Hills (2): 29375 Halsted Road, 248-553-4656 (6:30 a.m.-6:30 p.m., 12 months-12 years); 25005 Middlebelt Road, 248-477-4040 (6:30 a.m.-6:30 p.m.)
- Livonia: 38880 W. Six Mile Road, 734-591-2083 (6:30 a.m.-6 p.m.)
- Northville: 20675 Silver Spring Drive, 248-348-1589 (6:30 a.m.-6:30 p.m.)
- Novi: 24250 Homestead Court, 248-305-5461 (6:30 a.m.-6 p.m.)
- Rochester Hills: 226 Meadowfield Drive, 248-651-7171 (6:30 a.m.-6:30 p.m.)

- Southgate: 15500 Reeck Road, 734-281-1111 (6:30 a.m.-6 p.m.)
- Sterling Heights (4): 37201 Ryan Road, 586-268-1680 (6 a.m.-6 p.m.); 13777 15 Mile Road, 586-978-8930 (6:15 a.m.-6:30 p.m.); 13830 19 Mile Road, 586-247-1133 (6:15 a.m.-6:30 p.m.); 33300 Ryan Road, 586-978-9099 (6:30 a.m.-6:30 p.m.)
- Troy (3): 5480 Rochester Road, 248-828-0630 (6:30 a.m.-6:30 p.m.); 5877 John R Road, 248-879-6341 (6:30 a.m.-6:30 p.m.); 5135 Coolidge Highway, 248-641-8480 (6:30 a.m.-6:30 p.m.)
- West Bloomfield: 6615 Middlebelt Road, 248-855-1963 (6:30 a.m.-6:30 p.m.)

kindercare.com

Accredited learning centers running 40-plus years strong. Activities and lessons help kids grow socially, emotionally, physically and intellectually. Rates vary. 6 weeks-12 years (unless noted).

Rainbow Child Care Center

Note: All centers open Monday-Friday.

- Auburn Hills (2): 2411 N. Squirrel Road, 248-373-5999 (6:30 a.m.-6:30 p.m., 6 weeks-5 years/school year, through 12 for summer); 3388 Five Points Drive, 248-276-8626 (6:30 a.m.-6 p.m., 6 weeks-12 years)
- Chelsea: 1580 Commerce Park Drive, 734-475-6080 (6:30 a.m.-6 p.m., 6 weeks-5 years)

- Commerce: 2755 Haggerty Road, 248-960-0570 (6:30 a.m.-6:30 p.m., 6 weeks-12 years)
- Davison: 9203 Lapeer Road, 810-653-1206 (6:30 a.m.-6:30 p.m., 6 weeks-12 years old)
- Dearborn: 16200 Hubbard Drive, 313-982-9840 (6:30 a.m.-6 p.m., 6 weeks-6 years)
- Howell: 1840 N. Latson Road, 517-552-9600 (6:30 a.m.-6:30 p.m., 6 weeks-12 years)
- Troy: 5940 John R Road, 248-828-0260 (6:30 a.m.-6 p.m., 6 weeks-12 years)
- White Lake: 9125 Highland Road, 248-698-3471 (6:30 a.m.-6:30 p.m., 6 weeks-12 years)

rainbowccc.com

Using "The Creative Curriculum," Rainbow Child Care Centers emphasizes "supporting the whole child." Rates vary by location, number of days.

Sunny Skies Child Care

- Clawson (2): 529 Grove St., 248-280-1380 (4 weeks-5 years); 317 S. Crooks Road, 248-435-8445 (1-5 years)
- Huntington Woods: 10495 W. 11 Mile Road, 248-548-0290 (4 weeks-5 years)
- Waterford: 3881 Highland Road, 248-738-9579 (4 weeks-5 years)

sunnyskieschildcare.com

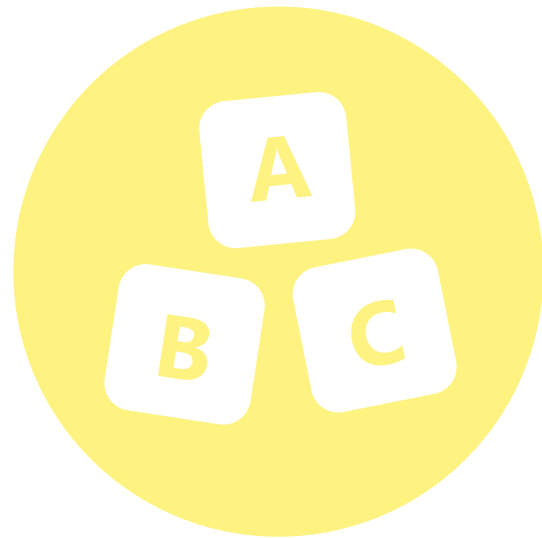
Opened in 1979. Emphasizes being a safe place. Programs include dramatic play, outdoor time, story time and more. Rates vary by location and age; call for details. 6:30 a.m.-6 p.m. Monday-Friday.

The Learning Experience

- Clarkston: 7210 Sashabaw Road, 248-625-5285 (6 weeks-5 years/school year, 6 weeks-12 years/before and after school care and summer)
- Farmington Hills: 23500 Orchard Lake Road, 248-427-0072 (6 weeks-8 years)
- Northville: 16635 Ridge Road, 248-374-2495 (6 weeks-10 years)
- Shelby Township: 51779 Van Dyke Ave., 586-997-0050 (6 weeks-12 years)
- South Lyon: 53318 10 Mile Road, 248-446-6283 (6 weeks-12 years)
- Sterling Heights: 13860 Canal Road, 586-566-4685 (6 weeks-8 years)
- Troy: 5660 New King Road, 248-267-9090 (6 weeks-8 years)

thelearningexperience.com

Safe, nurturing environment teaches life skills and academics. Staff goes through background checks, continuing education. Stop by to pick up a rate sheet. 6:30 a.m.-6:30 p.m. Monday-Friday.



The Learning Tree

- Howell: 1183 Parkway Drive, 517-545-3440
- Livonia North: 33901 Curtis Road, 734-261-1951
- Livonia South: 32955 Plymouth Road, 734-525-6369
- Livonia West: 37550 Seven Mile Road, 734-953-5708
- South Lyon: 22820 Valerie St., 248-446-8791

learningtreechildcare.com

One of the first U.S. child care centers to be National Academy of Early Childhood Programs-accredited. Emphasizes good nutrition. Since 1982. Ages 6 weeks-13 years. 6:30 a.m.-6:30 p.m. Monday-Friday.

Tutor Time

- Ann Arbor: 2380 Oak Valley Drive, 734-996-9352
- Canton (2): 951 N. Canton Center Drive, 734-981-8463; 2914 Canton Center Road, 734-394-0400

- Commerce: 8011 Commerce Road, 248-366-3348
- Farmington Hills: 24440 Orchard Lake Road, 248-888-0614
- Plymouth Township: 15225 Haggerty Road, 734-420-2700
- Shelby Township: 47177 Hayes Road, 586-532-7314
- Sterling Heights (2): 8305 14 Mile Road, 586-795-4770; 33055 Hayes Road, 586-264-6554
- Walled Lake: 1230 Pontiac Trail, 248-926-8686
- West Bloomfield: 6799 Daly Road, 248-865-9388 (6 weeks-13 years)

tutortime.com

A safe environment for kids to learn, healthy food, "LifeSmart Curriculum." Rates vary by location, number of days and times. 6 weeks-12 years unless noted. 6:30 a.m.-6:30 p.m. Monday-Friday.



Oh, baby – this is just the beginning!
Find more tips and advice at
MetroParent.com/Baby.